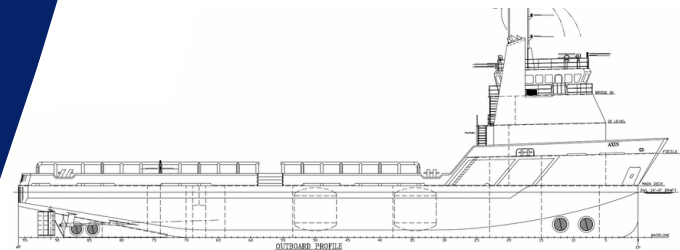


DP-2 PLATFORM SUPPLY VESSEL

M/V AXIS



MAIN SPECIFICATIONS

Length: 220' Light Draft: 8'
Beam: 48' Loaded Draft: 16'
Depth: 16'

CAPACITIES

Ballast/Drill Water: 89,000 gal. Waste Oil: 2,000 gal.
Fuel: 112,200 gal. Hydraulic Oil: 400 gal.
Liquid Mud: 4,280 barrels Lube Oil: 1,200 gal.
Dry Bulk: 5,400 Ft³ Deadweight: 1,630 LT
Potable Water: 7,800 gal.

CARGO DECK

Tonnage: 1,200 LT Width 40'
Strength (lbs./sq.-ft.): 540 Clear Space (W): 5,840 sq. ft.
Length: 146'

TONNAGE

Gross Tonnage: 98 Net. Tonnage: 67

ACCOMMODATIONS

Cabins/Berths for Crew and Passengers: 29 bunks
Passenger Seating: 36

MACHINERY

Main Engines: (2) Cat 3512-B-HD
Brake HP: 1911 each
Propulsion: Diesel
Generator: (2) C-32
Generator Drives: 910 kW Each
Bow Thrusters: (2) Omega 450 HP each
Stern Thrusters: (1) Omega 450 HP
Thruster Drive Engine: Electric
Rudders: Spade

PERFORMANCE

Maximum Speed 13.5 knots
Cruising Speed 11 knots
Maximum Fuel Consumption 125 USG/Hr
Cruising Fuel Consumption 100 USG/Hr

DISCHARGE RATES

Drill Water: 400 USG/min @ 260 ft
Fuel: 400 USG/min @ 260 ft
Liquid Mud: 700 USG/min @ 150 ft
Potable Water: 400 USG/min @ 80 ft
Dry Bulk: 80 psi

ELECTRONICS AND CONTROLS

GYRO Compass: 3
Depth Recorder: 1
Dynamic Positioning: Marine Technologies
DP References: 1
GPS: 2
Wind Tracker: 3
Main Engine Controls: Local and Bridge
Radar: (2) Furuno
Radio System: 1
VHF: 3

SPECIAL EQUIPMENT

Survival Craft 6ea -16 person Life Floats
Rescue Boat N/A
Bulk Compressors Leroy Comp Air
Oil Water Separator N/A
Welding Machine N/A
Sewage Treatment N/A

DOCUMENTATION

Class: ABS Class | DPS-2 | A1, circle e | AMS
Flag: USA | USCG: SubL, OSV. | Official Number: 1253732

Corporate Office

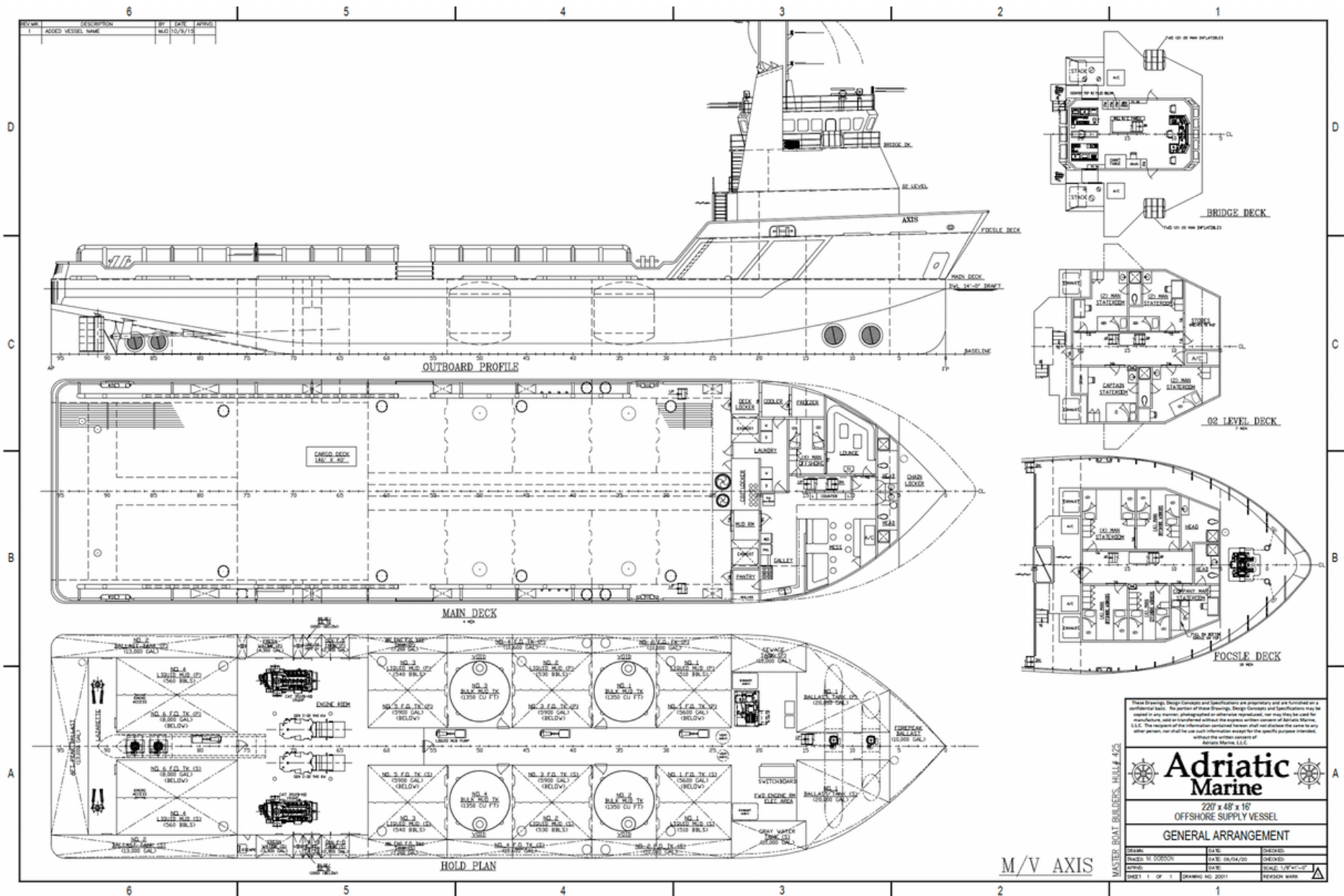
201 Raceland St., Raceland, LA 70394
P: 985-537-9330 F:

adriaticmarinellc.com



M/V AXIS

DP-2 PLATFORM
SUPPLY VESSEL



These Drawings, Design Concepts and Specifications are proprietary and are furnished on a confidential basis. The portion of these Drawings, Design Concepts and Specifications may be copied in any manner, photographed or otherwise reproduced, nor may they be used for manufacture, sold or transferred without the express written consent of Adriatic Marine, L.L.C. The recipient of this information understands and shall not disclose the same to any other person, nor shall he use such information except for the specific purpose intended, without the written consent of Adriatic Marine, L.L.C.

MASTER BOAT BUILDERS, HULL # 425

Adriatic Marine

220' x 48' x 16'
OFFSHORE SUPPLY VESSEL

GENERAL ARRANGEMENT

DRAWN	DATE	CHECKED
TRACED BY DOBSON	DATE: 09/04/20	CHECKED
CHECKED	DATE	CHECKED
DESIGN 1 OF 1	DRAWING NO. 2001	REVISION DATE

M/V AXIS

Corporate Office

201 Raceland St., Raceland, LA 70394

P: 985-537-9330 F:

adriaticmarinellc.com

