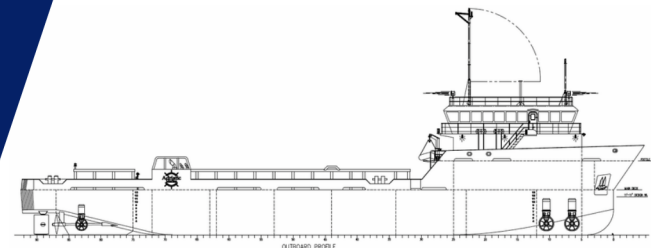


DP-2 PLATFORM SUPPLY VESSEL

M/V

SOLOMON



MAIN SPECIFICATIONS

Length: 195' Light Draft: 5' - 2"
Beam: 40' Loaded Draft: 11' - 10 3/8"
Depth: 14' Light Ship: TBD LT

CAPACITIES

Ballast/Drill Water: 75, 750 gal. Hydraulic Oil: 440 gal.
Fuel: 102,700 gal. Lube Oil: 335 gal.
Liquid Mud: 2,300 barrels Gear Oil: 440 gal.
Methanol: 1,200 barrels Oily Water: 1,060 gal.
Dry Bulk: n/a Deadweight: TBD LT
Potable Water: 15,700 gal.
Waste Oil: 1,640 gal.

CARGO DECK

Tonnage: TBD LT Width 31' 6"
Strength (lbs./sq.-ft.): 540 Clear Space (W): 4,125 sq. ft.
Length: 131'

TONNAGE

Gross Tonnage: 89 Net. Tonnage: 60

ACCOMMODATIONS

Cabins/Berths for Crew and Passengers: 40 bunks
Passenger Seating: 40

MACHINERY

Main Engines: (2) Cummins QSK-38M
Brake HP: 1,000 each
Propulsion: Diesel
Generator: (2) Cummins QSK-19, (1) Cummins QSM-11
Generator Drives: (2) 525 KW each, (1) 300 KW
Bow Thrusters: (2) 350 HP each
Stern Thrusters: (1) 335 HP
Thruster Drive Engine: Electric
Rudders: (2) Fishtail Type

PERFORMANCE

Maximum Speed: 14 knots
Cruising Speed: 12 knots
Maximum Fuel Consumption: 160 USG/Hr
Cruising Fuel Consumption: 100 USG/Hr

DISCHARGE RATES

Drill Water: 400 USG/min @ 80 ft
Fuel: 400 USG/min @ 80 ft
Liquid Mud: 700 USG/min @ 150 ft
Methanol: 400 USG/min @ 70 ft
Potable Water: 400 USG/min @ 80 ft
Dry Bulk: n/a

ELECTRONICS AND CONTROLS

GYRO Compass: 3
Depth Recorder: 1
Dynamic Positioning: Marine Technologies
DP References: Cyscan
GPS: 2
Wind Tracker: 3
Main Engine Controls: Local and Bridge
Radar: (2) Furuno
Radio System: 1
VHF: 3

SPECIAL EQUIPMENT

Anchor Chain: 2520' - 1" chain
Anchors: 2 x 2,000 lb.
Survival Craft: 4ea -20 person Life Floats
Rescue Boat: 1ea - 6 man capacity
Moon Pool: 36"
Bulk Compressors: n/a
Oil Water Separator: n/a
Welding Machine: n/a
Sewage Treatment: n/a

DOCUMENTATION

Class: ABS Class | DPS-2 | A1, circle e | AMS
Flag: USA | USCG: SubL, OSV. | Official Number: 1253213

Corporate Office

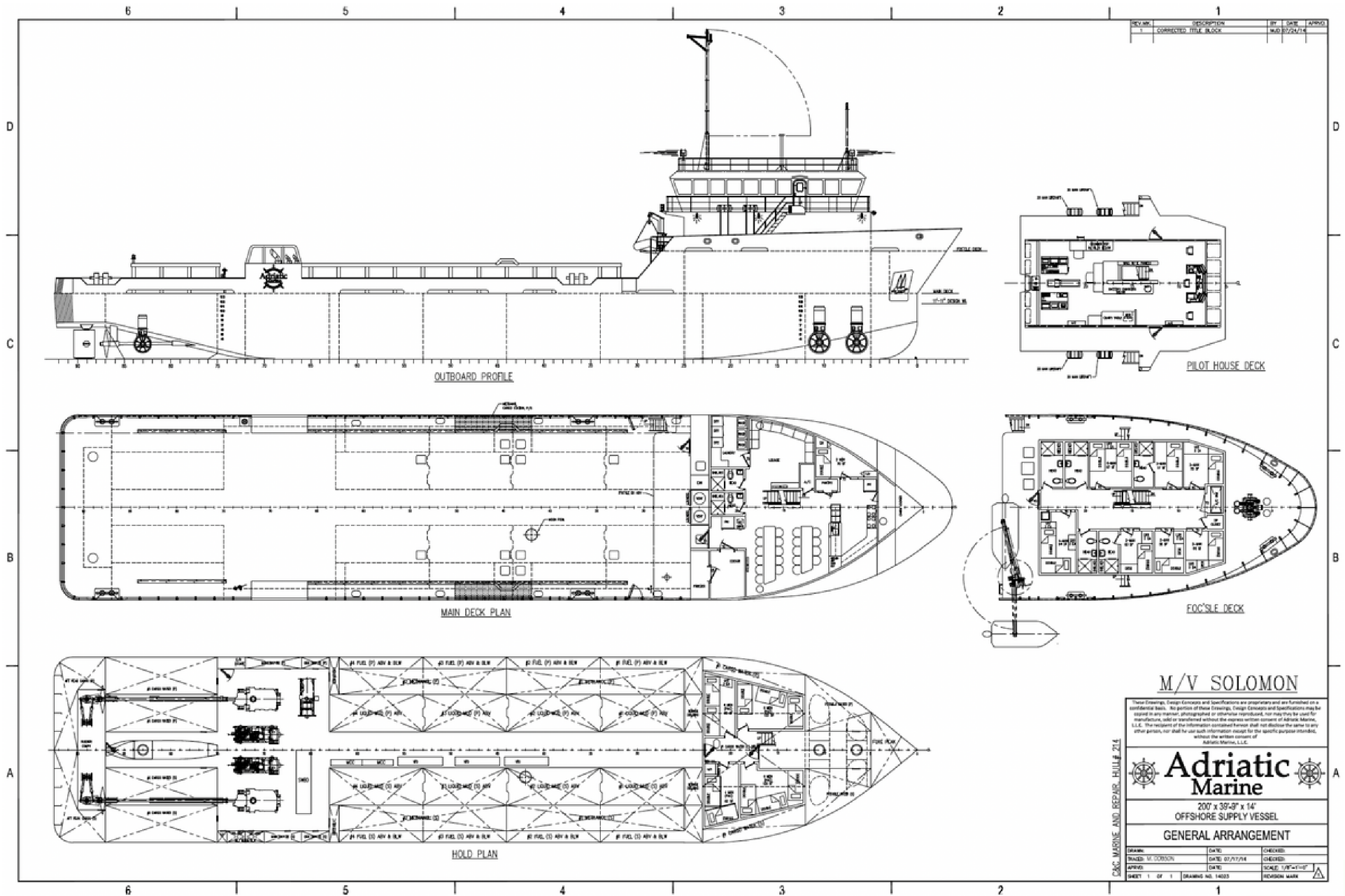
201 Raceland St., Raceland, LA 70394
P: 985-537-9330 F:

adriaticmarinellc.com



M/V SOLOMON

DP-2 PLATFORM
SUPPLY VESSEL



M/V SOLOMON

These Drawings, Design Concepts and Specifications are proprietary and are furnished on a confidential basis. No portion of these Drawings, Design Concepts and Specifications may be copied in any manner, photographed or otherwise reproduced, nor may they be used for manufacturing, unless so authorized without the express written consent of Adriatic Marine, L.L.C. The recipient of the information contained herein shall not disclose the same to any other person, nor shall he use such information in whole or in part for any other purpose, without the written consent of Adriatic Marine, L.L.C.

Adriatic Marine

200' x 39'-9" x 14'
OFFSHORE SUPPLY VESSEL

GENERAL ARRANGEMENT

DESIGNER	DATE	CHECKED
DRAWN BY: D. DORSON	DATE: 07/17/18	CHECKED:
APPROV:	DATE:	SCALE: 1/8"=1'-0"
SHEET 1 OF 1	DRAWING NO. 14000	REVISION MARK

Corporate Office

201 Raceland St., Raceland, LA 70394

P: 985-537-9330 F:

adriaticmarinellc.com

