

# DP-2 PLATFORM SUPPLY VESSEL

# M/V SARGASSO



## MAIN SPECIFICATIONS

Length: 195'                      Light Draft: 5'-2"  
Beam: 40'                        Loaded Draft: 11' - 10 3/8"  
Depth: 14'                        Light Ship: 699.10 LT

## CAPACITIES

Ballast/Drill Water: 120,200 gal.                      Hydraulic Oil: 440 gal.  
Fuel: 110,200 gal.                                        Lube Oil: 335 gal.  
Liquid Mud: 2,300 barrels                            Gear Oil: 440 gal.  
Dry Bulk: n/a    Oily Water: 1,060 gal.  
Potable Water: 15,700 gal.                            Deadweight: 1,270 LT  
Waste Oil: 1,640 gal.

## CARGO DECK

Tonnage: 800 LT                                        Width 31' 6"  
Strength (lbs./sq.-ft.): 540                            Clear Space (W): 4,125 sq. ft.  
Length: 131'

## TONNAGE

Gross Tonnage: 89                                      Net. Tonnage: 60

## ACCOMMODATIONS

Cabins/Berths for Crew and Passengers: 40 bunks  
Passenger Seating: 40

## MACHINERY

Main Engines: (2) Cummins KTA-38M  
Brake HP: 1,000 each  
Propulsion: Diesel  
Generator: (2) Cummins QSK-19, (1)  
Cummins QSM-11  
Generator Drives: (2) 525 KW each,  
(1) 300 KW  
Bow Thrusters: (2) 350 HP each  
Stern Thrusters: (1) 335 HP  
Thruster Drive Engine: Electric  
Rudders: (2) Fishtail Type

## PERFORMANCE

Maximum Speed: 14 knots  
Cruising Speed: 12 knots  
Maximum Fuel Consumption: 160 USG/Hr  
Cruising Fuel Consumption: 100 USG/Hr

## DISCHARGE RATES

Drill Water: 400 USG/min @ 80 ft  
Fuel: 400 USG/min @ 80 ft  
Liquid Mud: 700 USG/min @ 150 ft  
Potable Water: 400 USG/min @ 80 ft  
Dry Bulk: n/a

## ELECTRONICS AND CONTROLS

GYRO Compass: 3  
Depth Recorder: 1  
Dynamic Positioning: Marine Technologies  
DP References: Cyscan  
GPS: 2  
Wind Tracker: 3  
Main Engine Controls: Local and Bridge  
Radar: (2) Furuno  
Radio System: 1  
VHF: 3

## SPECIAL EQUIPMENT

Anchor Chain: 555' - 1" chain  
Anchors: 750 lb.  
Survival Craft: 4ea -20 person Life Floats  
Rescue Boat: 1ea - 6 man capacity  
Moon Pool: 36"  
Bulk Compressors: n/a  
Oil Water Separator: n/a  
Welding Machine: n/a  
Sewage Treatment: n/a

## DOCUMENTATION

Class: ABS Class | DPS-2 | A1, circle e | AMS  
Flag: USA | USCG: SubL, OSV. | Official Number: 1250740

## Corporate Office

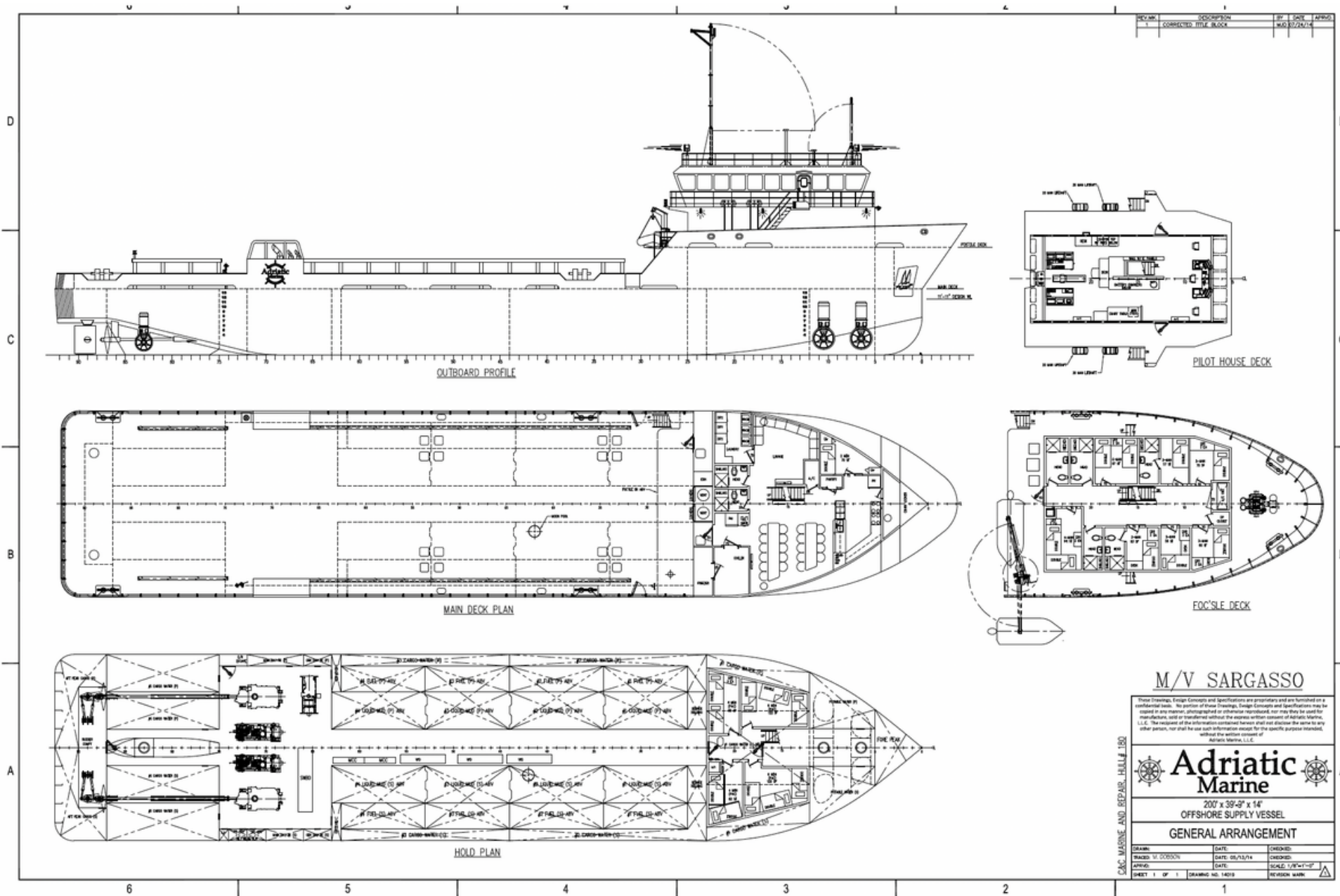
201 Raceland St., Raceland, LA 70394  
P: 985-537-9330 F:

[adriaticmarinellc.com](http://adriaticmarinellc.com)



# M/V SARGASSO

DP-2 PLATFORM  
SUPPLY VESSEL



**Corporate Office**  
201 Raceland St., Raceland, LA 70394  
P: 985-537-9330 F:

[adriaticmarinellc.com](http://adriaticmarinellc.com)

