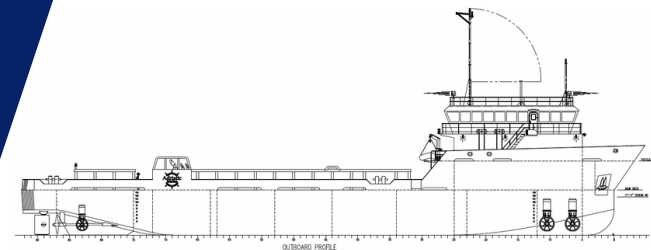


# DP-2 PLATFORM SUPPLY VESSEL

# M/V

# SOLOMON



## MAIN SPECIFICATIONS

Length: 195'      Light Draft: 5' - 2"  
Beam: 40'      Loaded Draft: 11' - 10 3/8"  
Depth: 14'      Light Ship: TBD LT

## CAPACITIES

Ballast/Drill Water: 75, 750 gal.      Hydraulic Oil: 440 gal.  
Fuel: 102,700 gal.      Lube Oil: 335 gal.  
Liquid Mud: 2,300 barrels      Gear Oil: 440 gal.  
Dry Bulk: n/a      Oily Water: 1,060 gal.  
Potable Water: 15,700 gal.      Deadweight: TBD LT  
Waste Oil: 1,640 gal.

## CARGO DECK

Tonnage: TBD LT      Width 31' 6"  
Strength (lbs./sq.-ft.): 540      Clear Space (W): 4,125 sq. ft.  
Length: 131'

## TONNAGE

Gross Tonnage: 89      Net. Tonnage: 60

## ACCOMMODATIONS

Cabins/Berths for Crew and Passengers: 40 bunks  
Passenger Seating: 40

## MACHINERY

Main Engines: (2) Cummins QSK-38M  
Brake HP: 1,000 each  
Propulsion: Diesel  
Generator: (2) Cummins QSK-19, (1)  
Cummins QSM-11  
Generator Drives: (2) 525 KW each,  
(1) 300 KW  
Bow Thrusters: (2) 350 HP each  
Stern Thrusters: (1) 335 HP  
Thruster Drive Engine: Electric  
Rudders: (2) Fishtail Type

## PERFORMANCE

Maximum Speed: 14 knots  
Cruising Speed: 12 knots  
Maximum Fuel Consumption: 160 USG/Hr  
Cruising Fuel Consumption: 100 USG/Hr

## DISCHARGE RATES

Drill Water: 400 USG/min @ 80 ft  
Fuel: 400 USG/min @ 80 ft  
Liquid Mud: 700 USG/min @ 150 ft  
Methanol: 400 USG/min @ 70 ft  
Potable Water: 400 USG/min @ 80 ft  
Dry Bulk: n/a

## ELECTRONICS AND CONTROLS

GYRO Compass: 3  
Depth Recorder: 1  
Dynamic Positioning: Marine Technologies  
DP References: Cyscan  
GPS: 2  
Wind Tracker: 3  
Main Engine Controls: Local and Bridge  
Radar: (2) Furuno  
Radio System: 1  
VHF: 3

## SPECIAL EQUIPMENT

Anchor Chain: 2520' - 1" chain  
Anchors: 2 x 2,000 lb.  
Survival Craft: 4ea -20 person Life Floats  
Rescue Boat: 1ea - 6 man capacity  
Moon Pool: 36"  
Bulk Compressors: n/a  
Oil Water Separator: n/a  
Welding Machine: n/a  
Sewage Treatment: n/a

## DOCUMENTATION

Class: ABS Class | DPS-2 | A1, circle e | AMS  
Flag: USA | USCG: SubL, OSV. | Official Number: 1253213

## Corporate Office

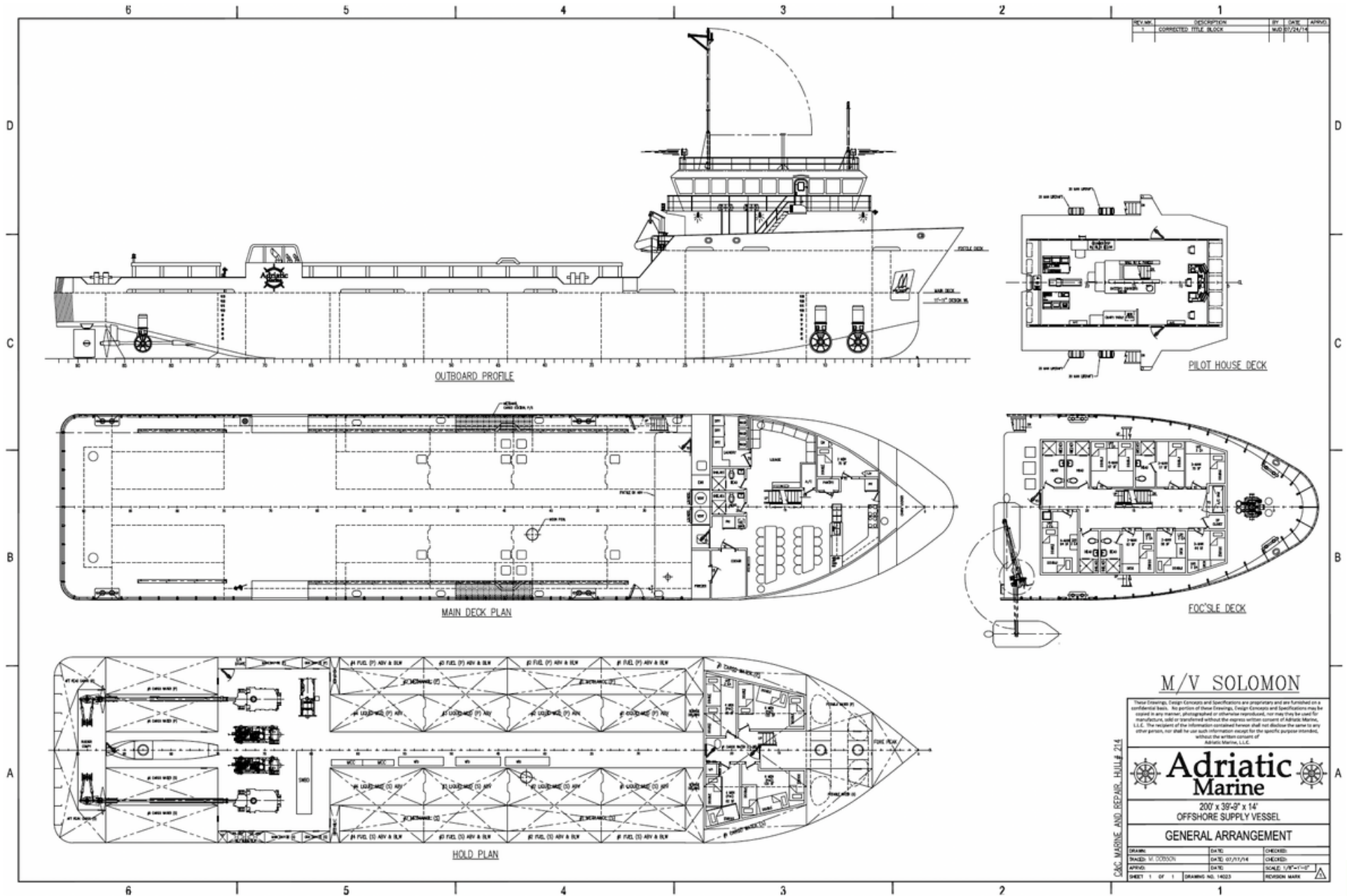
201 Raceland St., Raceland, LA 70394  
P: 985-537-9330 F:

[adriaticmarinellc.com](http://adriaticmarinellc.com)



# M/V SOLOMON

DP-2 PLATFORM  
SUPPLY VESSEL



**Corporate Office**  
201 Raceland St., Raceland, LA 70394  
P: 985-537-9330 F:

adriaticmarinellc.com

