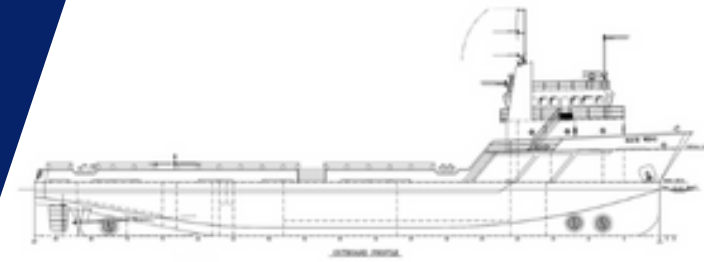


# DP-1 PLATFORM SUPPLY VESSEL

# M/V BLUE

# WING



## MAIN SPECIFICATIONS

Length: 205'                      Light Draft: 7' 4"  
Beam: 46'                         Loaded Draft: 12' 6"  
Depth: 15'

## CAPACITIES

Ballast/Drill Water: 74,000 gal.                      Hydraulic Oil: 600 gal.  
Fuel: 100,000/190,000 gal.                         Lube Oil: 1,800 gal.  
Liquid Mud: 2,300 bbls.                             Sewage & Greywater:  
Dry Bulk: (6) 6,000 Ft3                             4,400 gal. each  
Potable Water: 12,000 gal.                         Deadweight: n/a  
Waste Oil: 2,600 gal.

## CARGO DECK

Tonnage: 925 LT                                         Width: 40'  
Strength (lbs./sq.-ft.): 540                         Clear Space (W): 5,280 sq. ft.  
Length: 132'

## TONNAGE

Gross Tonnage: 97                                      Net. Tonnage: 66

## ACCOMMODATIONS

Cabins/Berths for Crew and Passengers: 22 berths  
Certified to Carry: 40

## MACHINERY

Main Engines: (2) Caterpillar 3512B  
Brake HP: 3150  
Propulsion: Diesel  
Generator Parallel Capacity: 1,350 KW  
(480 V)  
Bow Thruster: (2) Schottel  
Bow Thruster Drive Engine: Diesel  
Rudders: Independent Rudders  
Stern Thruster: (1) Schottel

## ELECTRONICS AND CONTROLS

GYRO Compass: 2  
Depth Recorder: 1  
Dynamic Positioning: Yes  
DP References: Yes  
GPS: 2  
Wind Tracker: Yes  
Main Engine Controls: Local and Bridge  
Radar: (2) Furuno  
SSB Radio: 1  
VHF: 3  
Fathometer: (1) Furuno  
Interfaced CD Plotter: n/a  
DGPS: (2) Furuno  
AIS: (1) Furuno

## PERFORMANCE

Maximum Speed: 13.5 knots  
Cruising Speed: 11 knots  
Maximum HP: 3,150 @ 1,600 RPM  
Propellers: 5 BLD Nibral

## DISCHARGE RATES

Drill Water: 400 USG/min @ 260 ft  
Fuel: 400 USG/min @ 260 ft  
Liquid Mud: 700 USG/min @ 150 ft  
Potable Water: 400 USG/min @ 80 ft  
Dry Bulk: 80 psi

## SPECIAL EQUIPMENT

Anchor Chain: 555' - 1" chain  
Anchors: (2) 2,000 lb.  
Survival Craft: 3ea -15 person Life Floats  
Rescue Boat: n/a  
Walk-In Cooler: Yes  
Walk-In Freezer: Yes  
A/C & Heater: 15 tons  
Fire Monitor: Ekhart

## DOCUMENTATION

Class: OSV DP-1 | Builder: Master Boats  
Flag: USA | USCG: SubL, OSV. | Official Number: 1180825

## Corporate Office

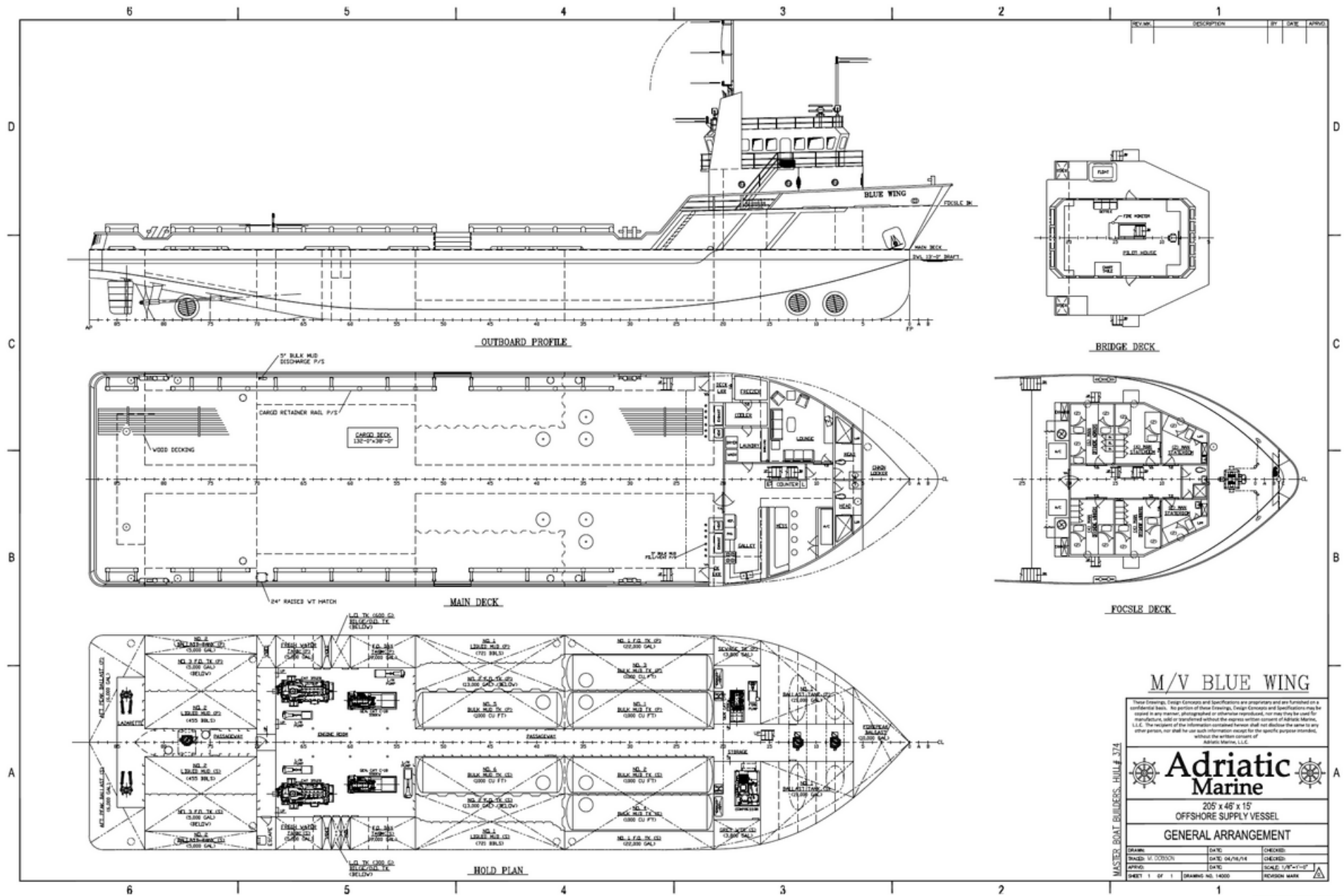
201 Raceland St., Raceland, LA 70394  
P: 985-537-9330 F:

[adriaticmarinellc.com](http://adriaticmarinellc.com)



# M/V BLUE WING

DP-1 PLATFORM  
SUPPLY VESSEL



## M/V BLUE WING

These Drawings, Design Concepts and Specifications are proprietary and are furnished on a confidential basis. No portion of these Drawings, Design Concepts and Specifications may be copied in any manner, photographed or otherwise reproduced, nor may they be used for manufacturing, sold or transferred without the express written consent of Adriatic Marine, L.L.C. The recipient of the information contained herein shall not disclose the same to any other person, nor shall he use such information except for the specific purpose intended, without the written consent of Adriatic Marine, L.L.C.

**Adriatic Marine**  
205' x 46' x 15'  
OFFSHORE SUPPLY VESSEL  
GENERAL ARRANGEMENT

DRAWN: M. SOLOMON	DATE: 04/16/14	CHECKED:
APPROVED:	DATE:	CHECKED:
SHEET 1 OF 1	DRAWING NO. 14000	REVISION MARK

**Corporate Office**  
201 Raceland St., Raceland, LA 70394  
P: 985-537-9330 F:

adriaticmarinellc.com

