

DP-1 PLATFORM SUPPLY VESSEL

M/V BERING



MAIN SPECIFICATIONS

Length: 195' Light Draft: 5'-2"
Length BP: 178' Loaded Draft: 11'-2"
Beam: 40' Light Ship 650.11 LT
Depth: 14'

CAPACITIES

Ballast/Drill Water: 120,875 gal. Waste Oil: 1,640 gal.
Fuel: 106,800 gal. Hydraulic Oil: 400 gal.
Liquid Mud: 2,300 barrels Lube Oil: 440 gal.
Dry Bulk: n/a Oily Water: 1,060 gal.
Potable Water: 9,030 gal. Deadweight: 1,100 LT

CARGO DECK

Tonnage: 700 LT Width 33'
Strength (lbs./sq.-ft.): 540 Clear Space (W): 4,300 sq. ft.
Length: 131'

TONNAGE

Gross Tonnage: 99 Net. Tonnage: 78

ACCOMMODATIONS

Cabins/Berths for Crew and Passengers: 38 bunks
Passenger Seating: 40

MACHINERY

Main Engines: (2) Cummins KTA-38MO
Brake HP: 1000 each
Propulsion: Diesel
Generator: (2) Cummins QSM11
Generator Drives: 286 kW Each
Bow Thrusters: 450 HP each
Stern Thrusters: n/a
Thruster Drive Engine: Electric
Rudders: 2 Fishtail Type

PERFORMANCE

Maximum Speed: 14 knots
Cruising Speed: 12 knots
Maximum Fuel Consumption: 160 USG/Hr
Cruising Fuel Consumption: 100 USG/Hr

DISCHARGE RATES

Drill Water: 400 USG/min @ 80 ft
Fuel: 400 USG/min @ 80 ft
Liquid Mud: 700 USG/min @ 150 ft
Potable Water: 400 USG/min @ 80 ft
Dry Bulk: n/a

ELECTRONICS AND CONTROLS

GYRO Compass: 2
Depth Recorder: 1
Dynamic Positioning: Yes
DP References: Yes
GPS: 1
Wind Tracker: Yes
Main Engine Controls: Local and Bridge
Radar: (2) Furuno
Radio System: 1
VHF: 3

SPECIAL EQUIPMENT

Anchor Chain: 555'-1" chain
Anchors: 750 lbs.
Survival Craft 4ea -20 person Life Floats
Rescue Boat: 1 - 6 man capacity
Bulk Compressors: n/a
Oil Water Separator: Helisep
Welding Machine: n/a
Sewage Treatment: Yes

DOCUMENTATION

Class: ABS Class | DPS-1 | A1, circle e | AMS
Flag: USA | USCG: SubL, OSV. | Official Number: 1242307

Corporate Office

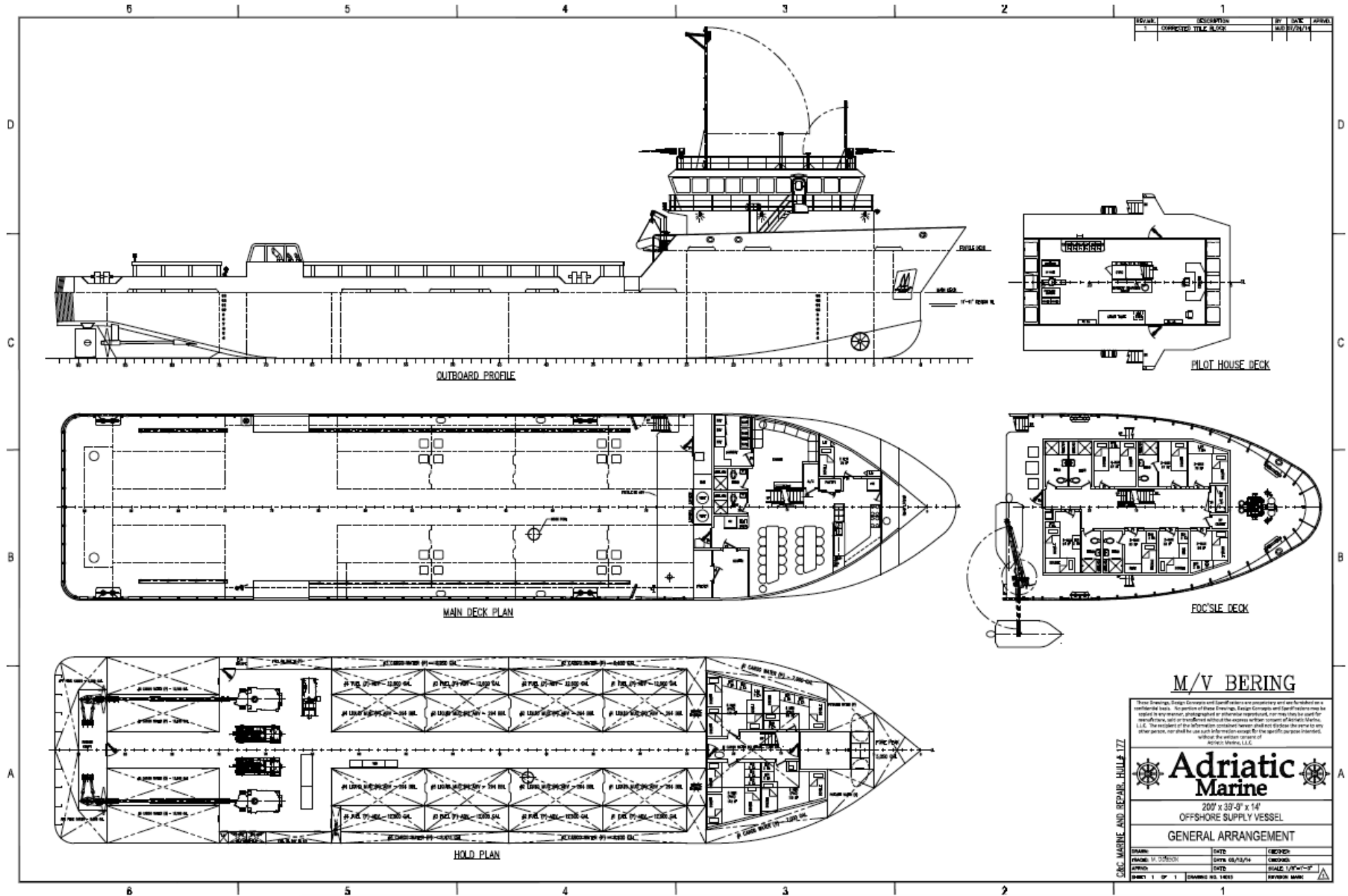
201 Raceland St., Raceland, LA 70394
P: 985-537-9330 F:

adriaticmarinellc.com



M/V BERING

DP-1 PLATFORM
SUPPLY VESSEL



M/V BERING

These Drawings, Design Concepts and Specifications are proprietary and are furnished on a non-transferable basis. No portion of these Drawings, Design Concepts and Specifications may be copied in any manner, abstracted or otherwise reproduced, nor may they be used for manufacture, and/or transferred without the express written consent of Adriatic Marine, L.L.C. The recipient of the information contained herein shall disclose the same to any other person, nor shall he use such information except for the specific purpose intended, without the express consent of Adriatic Marine, L.L.C.

Adriatic Marine

207' x 33'-0" x 14'
OFFSHORE SUPPLY VESSEL
GENERAL ARRANGEMENT

DESIGN:	DATE:	CHECKED:
DRAWN: M. GORDON	DATE: 06/23/16	CHECKED:
APPROV:	DATE:	SCALE: 1/8"=1'-0"
SHEET 1 OF 1	DRAWING NO. 1403	REVISION MARK

Corporate Office
201 Raceland St., Raceland, LA 70394
P: 985-537-9330 F:

adriaticmarinellc.com

