

# DP-1 PLATFORM SUPPLY VESSEL

# M/V CORAL



## MAIN SPECIFICATIONS

Length: 195'  
Length BP: 178'  
Beam: 40'  
Depth: 14'  
Light Draft: 5'-2"  
Loaded Draft: 11'-2"  
Light Ship: 650.11 LT

## CAPACITIES

Ballast/Drill Water: 84,660 gal.  
Fuel: 147,640 gal.  
Liquid Mud: 2,200 barrels  
Dry Bulk: n/a  
Potable Water: 9,030 gal.  
Waste Oil: 1,640 gal.  
Hydraulic Oil: 400 gal.  
Lube Oil: 440 gal.  
Oily Water: 1,060 gal.  
Deadweight: 1,100 LT

## CARGO DECK

Tonnage: 700 LT  
Strength (lbs./sq.-ft.): 540  
Length: 131'  
Width 33'  
Clear Space (W): 4,300 sq. ft.

## TONNAGE

Gross Tonnage: 99      Net. Tonnage: 78

## ACCOMMODATIONS

Cabins/Berths for Crew and Passengers: 37 bunks  
Passenger Seating: 40

## MACHINERY

Main Engines: (2) Cummins KTA-38MO  
Brake HP: 1000 each  
Propulsion: Diesel  
Generator: (2) Cummins QSM11  
Generator Drives: 286 kW Each  
Bow Thrusters: 450 HP each  
Stern Thrusters: n/a  
Thruster Drive Engine: Diesel  
Rudders: 2 Fishtail Type

## PERFORMANCE

Maximum Speed: 14 knots  
Cruising Speed: 12 knots  
Maximum Fuel Consumption: 160 USG/Hr  
Cruising Fuel Consumption: 100 USG/Hr

## DISCHARGE RATES

Drill Water: 400 USG/min @ 80 ft  
Fuel: 400 USG/min @ 80 ft  
Liquid Mud: 700 USG/min @ 150 ft  
Potable Water: 400 USG/min @ 80 ft  
Dry Bulk: n/a

## ELECTRONICS AND CONTROLS

GYRO Compass: 2  
Depth Recorder: 1  
Dynamic Positioning: Yes  
DP References: Yes  
GPS: 1  
Wind Tracker: Yes  
Main Engine Controls: Local and Bridge  
Radar: (2) Furuno  
Radio System: 1  
VHF: 3

## SPECIAL EQUIPMENT

Anchor Chain: 555'-1" chain  
Anchors: 750 lbs.  
Survival Craft 4ea -20 person Life Floats  
Rescue Boat: 1 - 6 man capacity  
Moon Pool: 36"  
Bulk Compressors: n/a  
Oil Water Separator: Helisep  
Welding Machine: n/a  
Sewage Treatment: Yes

## DOCUMENTATION

Class: ABS Class | DPS-1 | A1, circle e | AMS  
Flag: USA | USCG: SubL, OSV. | Official Number: 1238515

## Corporate Office

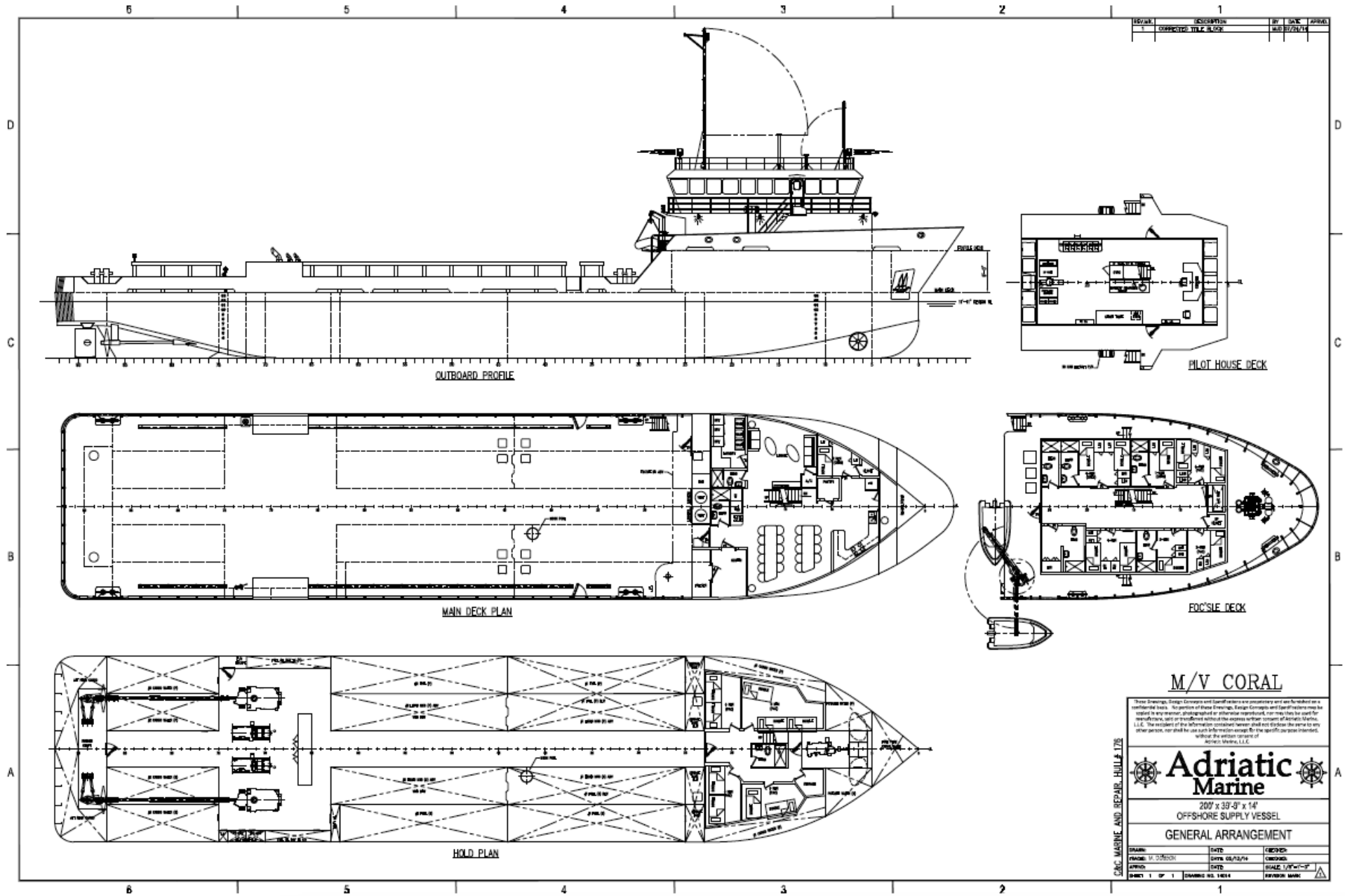
201 Raceland St., Raceland, LA 70394  
P: 985-537-9330 F:

[adriaticmarinellc.com](http://adriaticmarinellc.com)



# M/V CORAL

DP-1 PLATFORM  
SUPPLY VESSEL



## M/V CORAL

These Drawings, Design, Conveys and Specifications are proprietary and are furnished on a confidential basis. Reproduction of these Drawings, Design Conveys and Specifications may be copied in any manner, photographed or otherwise reproduced, nor may they be used for manufacturing, sold or transferred without the express written consent of Adriatic Marine, L.L.C. The recipient of the information contained herein shall not disclose the same to any other person, nor shall he use such information except for the specific purpose intended, without the written consent of Adriatic Marine, L.L.C.



**Adriatic Marine**

207 x 39'-0" x 14'  
OFFSHORE SUPPLY VESSEL

**GENERAL ARRANGEMENT**

NO.	DATE	BY	DATE	BY	DATE
DRAWN		DATE		CHECKED	
MADE	M. GIBSON	DATE	06/13/16	CHECKED	
APPROV.		DATE		SCALE	1/8" = 1'-0"
SHEET	1 OF 1	DRAWING NO.	14214	REVISION	NONE

**Corporate Office**  
201 Raceland St., Raceland, LA 70394  
P: 985-537-9330 F:

adriaticmarinellc.com

