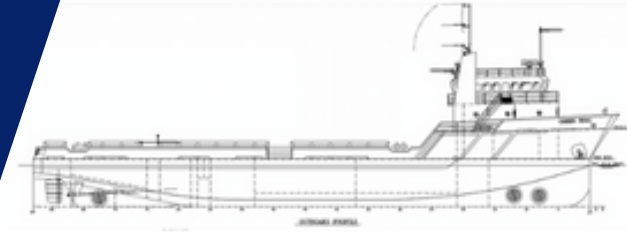


DP-1 PLATFORM SUPPLY VESSEL M/V GREEN WING



MAIN SPECIFICATIONS

Length: 205' Light Draft: 7' 4"
Beam: 46' Loaded Draft: 12' 6"
Depth: 15'

CAPACITIES

Ballast/Drill Water: 74,000 gal. Hydraulic Oil: 600 gal.
Fuel: 100,000/190,000 gal. Lube Oil: 1,800 gal.
Liquid Mud: 2,300 bbls. Sewage & Greywater:
Dry Bulk: (6) 6,000 Ft3 4,400 gal. each
Potable Water: 12,000 gal. Deadweight: n/a
Waste Oil: 2,600 gal.

CARGO DECK

Tonnage: 925 LT Width: 40'
Strength (lbs./sq.-ft.): 540 Clear Space (W): 5,280 sq. ft.
Length: 132'

TONNAGE

Gross Tonnage: 97 Net. Tonnage: 66

ACCOMMODATIONS

Cabins/Berths for Crew and Passengers: 22 berths
Certified to Carry: 40

MACHINERY

Main Engines: (2) Caterpillar 3512B
Brake HP: 3150
Propulsion: Diesel
Generator Parallel Capacity: 1,350 KW
(480 V)
Bow Thruster: (2) Schottel
Bow Thruster Drive Engine: Diesel
Rudders: Independent Rudders
Stern Thruster: (1) Schottel

ELECTRONICS AND CONTROLS

GYRO Compass: 2
Depth Recorder: 1
Dynamic Positioning: Yes
DP References: Yes
GPS: 2
Wind Tracker: Yes
Main Engine Controls: Local and Bridge
Radar: (2) Furuno
SSB Radio: 1
VHF: 3
Fathometer: (1) Furuno
Interfaced CD Plotter: n/a
DGPS: (2) Furuno
AIS: (1) Furuno

PERFORMANCE

Maximum Speed: 13.5 knots
Cruising Speed: 11 knots
Maximum HP: 3,150 @ 1,600 RPM
Propellers: 5 BLD Nibral

DISCHARGE RATES

Drill Water: 400 USG/min @ 260 ft
Fuel: 400 USG/min @ 260 ft
Liquid Mud: 700 USG/min @ 150 ft
Potable Water: 400 USG/min @ 80 ft
Dry Bulk: 80 psi

SPECIAL EQUIPMENT

Anchor Chain: 555' - 1" chain
Anchors: (2) 2,000 lb.
Survival Craft: 3ea -15 person Life Floats
Rescue Boat: n/a
Walk-In Cooler: Yes
Walk-In Freezer: Yes
A/C & Heater: 15 tons
Fire Monitor: Ekhart

DOCUMENTATION

Class: OSV DP-1 | Builder: Master Boats
Flag: USA | USCG: SubL, OSV. | Official Number: 1194253

Corporate Office

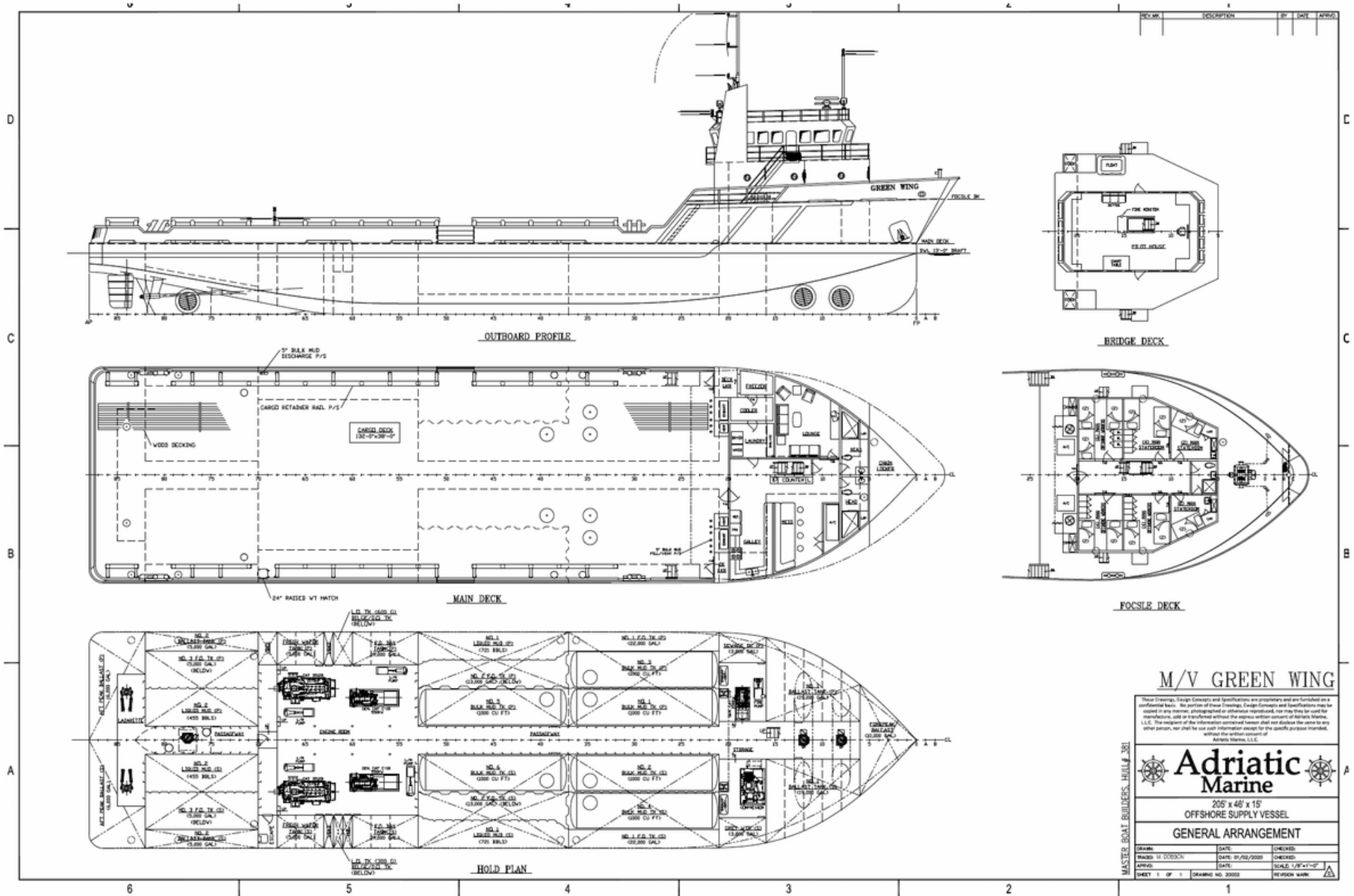
201 Raceland St., Raceland, LA 70394
P: 985-537-9330 F:

adriaticmarinellc.com



M/V GREEN WING

DP-1 PLATFORM
SUPPLY VESSEL



M/V GREEN WING

These Drawings, Design Concepts and Specifications are proprietary and are furnished as a confidential basis. No portion of these Drawings, Design Concepts and Specifications may be copied or in any manner, reproduced or otherwise transmitted, nor may they be used for manufacture, sale or transport without the express written consent of Adriatic Marine, L.L.C. The recipient of the information contained herein shall not disclose the same to any other person, nor shall he use such information except for the specific purpose intended, without the written consent of Adriatic Marine, L.L.C.

Adriatic Marine

205' x 46' x 15'

OFFSHORE SUPPLY VESSEL

GENERAL ARRANGEMENT

DRAWN	DATE	CHECKED
DESIGNED BY	DATE	CHECKED
APPROVED	DATE	CHECKED
SHEET 1 OF 1	DRAWING NO. 20003	REVISION MARK

Corporate Office
201 Raceland St., Raceland, LA 70394
P: 985-537-9330 F:

adriaticmarinellc.com

