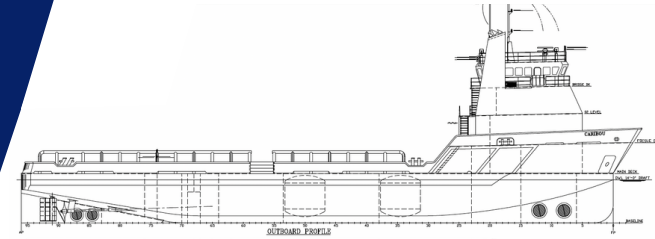


DP-2 PLATFORM SUPPLY VESSEL M/V CARIBOU



MAIN SPECIFICATIONS

Length: 220' Light Draft: 8'
Beam: 48' Loaded Draft: 16'
Depth: 16'

CAPACITIES

Ballast/Drill Water: 89,000 gal. Waste Oil: 2,000 gal.
Fuel: 112,200 gal. Hydraulic Oil: 400 gal.
Liquid Mud: 4,280 barrels Lube Oil: 1,200 gal.
Dry Bulk: 5,400 Ft3 Deadweight: 1,630 LT
Potable Water: 7,800 gal.

CARGO DECK

Tonnage: 1,200 LT Width 40'
Strength (lbs./sq.-ft.): 540 Clear Space (W): 5,840 sq. ft.
Length: 146'

TONNAGE

Gross Tonnage: 98 Net. Tonnage: 67

ACCOMMODATIONS

Cabins/Berths for Crew and Passengers: 29 bunks
Passenger Seating: 36

MACHINERY

Main Engines: (2) Cat 3512-B-HD
Brake HP: 1911 each
Propulsion: Diesel
Generator: (2) C-32
Generator Drives: 910 kW Each
Bow Thrusters: (2) Omega 450 HP each
Stern Thrusters: (2) Omega 300 HP
Thruster Drive Engine: Electric
Rudders: Spade

PERFORMANCE

Maximum Speed 13.5 knots
Cruising Speed 11 knots
Maximum Fuel Consumption 125 USG/Hr
Cruising Fuel Consumption 100 USG/Hr

DISCHARGE RATES

Drill Water: 400 USG/min @ 260 ft
Fuel: 400 USG/min @ 260 ft
Liquid Mud: 700 USG/min @ 150 ft
Potable Water: 400 USG/min @ 80 ft
Dry Bulk: 80 psi

ELECTRONICS AND CONTROLS

GYRO Compass: 3
Depth Recorder: 1
Dynamic Positioning: Marine Technologies
DP References: 1
GPS: 2
Wind Tracker: 3
Main Engine Controls: Local and Bridge
Radar: (2) Furuno
Radio System: 1
VHF: 3

SPECIAL EQUIPMENT

Survival Craft 6ea -16 person Life Floats
Rescue Boat N/A
Bulk Compressors Leroy Comp Air
Oil Water Separator N/A
Welding Machine N/A
Sewage Treatment N/A

DOCUMENTATION

Class: ABS Class | DPS-2 | A1, circle e | AMS
Flag: USA | USCG: SubL, OSV. | Official Number: --

Corporate Office

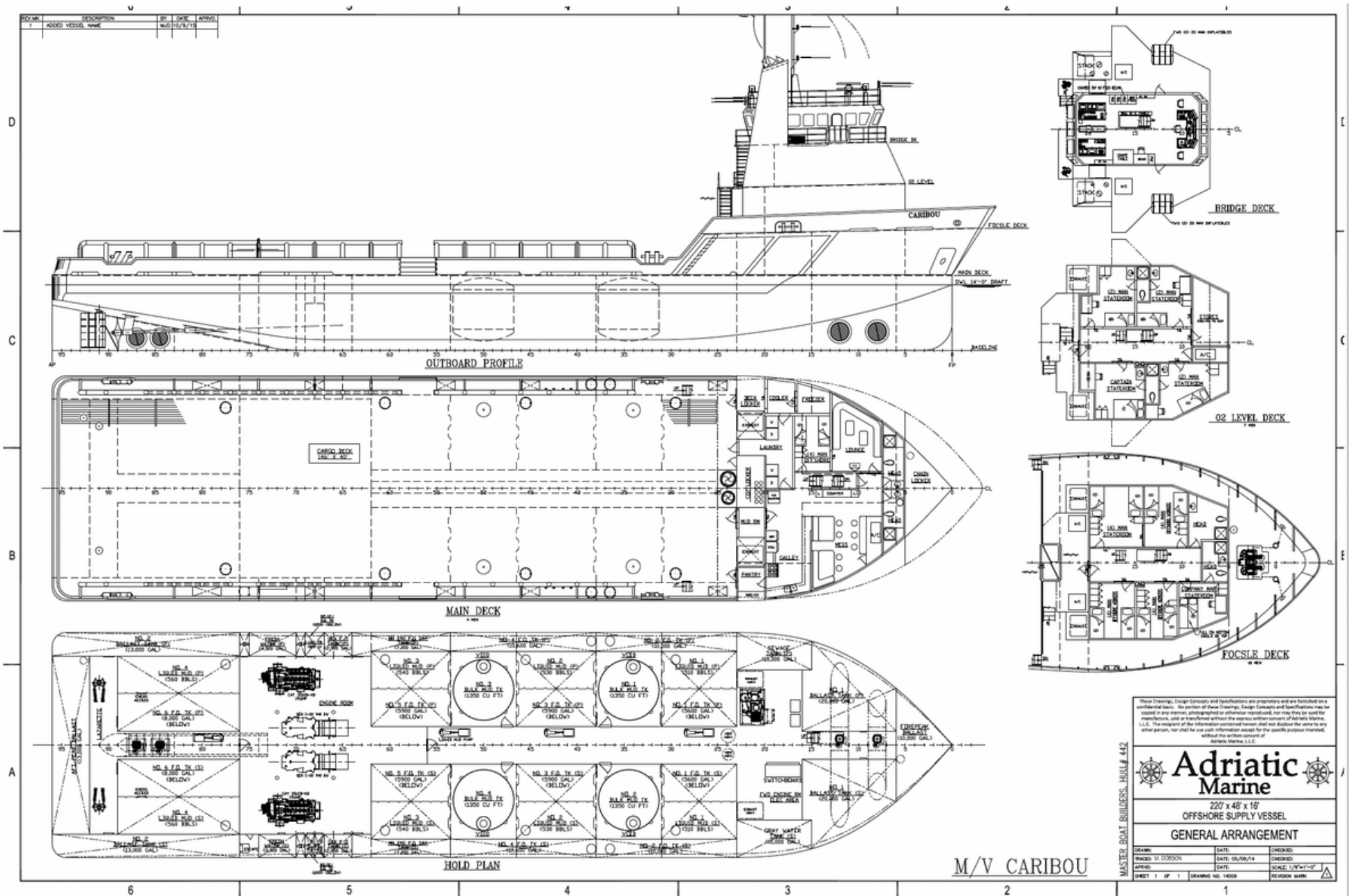
201 Raceland St., Raceland, LA 70394
P: 985-537-9330 F:

adriaticmarinellc.com



M/V CARIBOU

DP-2 PLATFORM
SUPPLY VESSEL



Corporate Office
201 Raceland St., Raceland, LA 70394
P: 985-537-9330 F:

adriaticmarinellc.com

