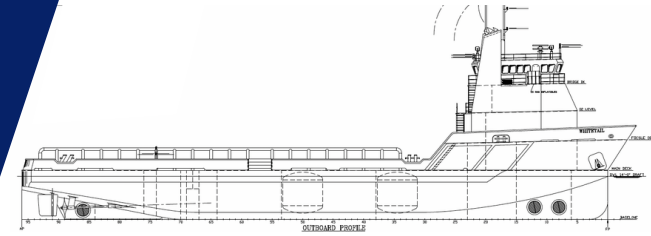


# DP-2 PLATFORM SUPPLY VESSEL M/V WHITETAIL



## MAIN SPECIFICATIONS

Length: 220'    Light Draft: 8'  
Beam: 48'        Loaded Draft: 16'  
Depth: 16'

## CAPACITIES

Ballast/Drill Water: 89,000 gal.    Waste Oil: 2,000 gal.  
Fuel: 112,200 gal.                    Hydraulic Oil: 400 gal.  
Liquid Mud: 4,280 barrels         Lube Oil: 1,200 gal.  
Dry Bulk: 5,400 Ft3                    Deadweight: 1,630 LT  
Potable Water: 7,800 gal.

## CARGO DECK

Tonnage: 1,200 LT                      Width 40'  
Strength (lbs./sq.-ft.): 540        Clear Space (W): 5,840 sq. ft.  
Length: 146'

## TONNAGE

Gross Tonnage: 98    Net. Tonnage: 67

## ACCOMMODATIONS

Cabins/Berths for Crew and Passengers: 42 bunks  
Passenger Seating: 42

## MACHINERY

Main Engines: (2) Cat 3512-B-HD  
Brake HP: 1911 each  
Propulsion: Diesel  
Generator: (2) C-32  
Generator Drives: 910 kW Each  
Bow Thrusters: (2) Omega 450 HP each  
Stern Thrusters: (1) Omega 450 HP  
Thruster Drive Engine: Electric  
Rudders: Spade

## PERFORMANCE

Maximum Speed 13.5 knots  
Cruising Speed 11 knots  
Maximum Fuel Consumption 125 USG/Hr  
Cruising Fuel Consumption 100 USG/Hr

## DISCHARGE RATES

Drill Water: 400 USG/min @ 260 ft  
Fuel: 400 USG/min @ 260 ft  
Liquid Mud: 700 USG/min @ 150 ft  
Potable Water: 400 USG/min @ 80 ft  
Dry Bulk: 80 psi

## ELECTRONICS AND CONTROLS

GYRO Compass: 3  
Depth Recorder: 1  
Dynamic Positioning: Marine Technologies  
DP References: 1  
GPS: 2  
Wind Tracker: 3  
Main Engine Controls: Local and Bridge  
Radar: (2) Furuno  
Radio System: 1  
VHF: 3

## SPECIAL EQUIPMENT

Survival Craft 6ea -16 person Life Floats  
Rescue Boat N/A  
Bulk Compressors Leroy Comp Air  
Oil Water Separator N/A  
Welding Machine N/A  
Sewage Treatment N/A

## DOCUMENTATION

Class: ABS Class | DPS-2 | A1, circle e | AMS  
Flag: USA | USCG: SubL, OSV. | Official Number: 1249975

## Corporate Office

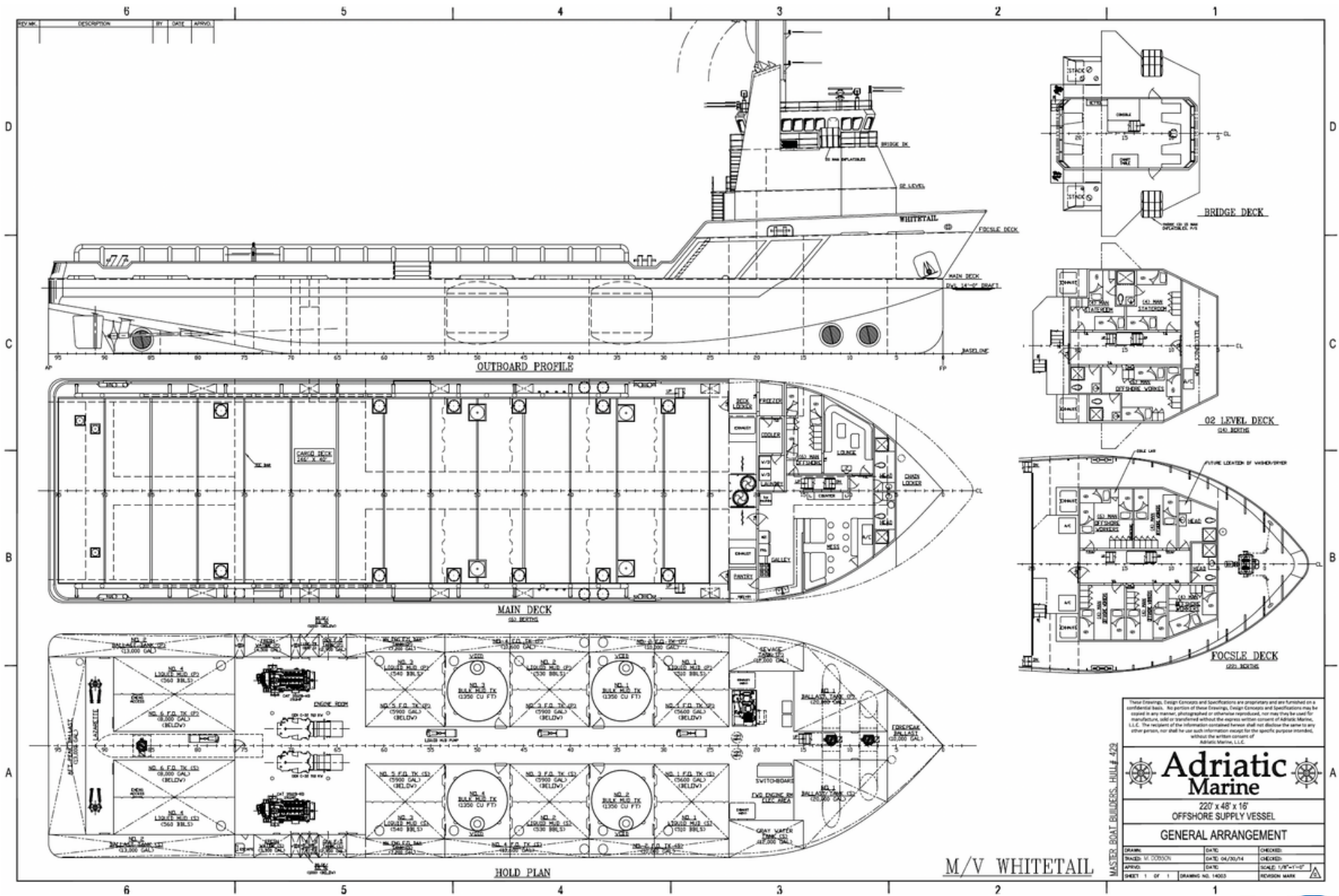
201 Raceland St., Raceland, LA 70394  
P: 985-537-9330 F:

[adriaticmarinellc.com](http://adriaticmarinellc.com)



# M/V WHITETAIL

DP-2 PLATFORM  
SUPPLY VESSEL



These Drawings, Design Concepts and Specifications are proprietary and are furnished on a confidential basis. No portion of these Drawings, Design Concepts and Specifications may be copied, reproduced, photocopied or otherwise transmitted, used or otherwise used for manufacturing, sale or otherwise without the express written consent of Adriatic Marine, L.L.C. The recipient of the information contained herein shall not disclose the same to any other person, nor shall he use such information except for the specific purpose intended, without the written consent of Adriatic Marine, L.L.C.

**Adriatic Marine**  
220' x 48' x 16'  
OFFSHORE SUPPLY VESSEL  
GENERAL ARRANGEMENT

DESIGNER:	DATE:	CHECKED:
DRAWN BY:	DATE:	CHECKED:
APPROVED:	DATE:	CHECKED:
SHEET 1 OF 1	DRAWING NO. 14003	REVISION MARK

**Corporate Office**  
201 Raceland St., Raceland, LA 70394  
P: 985-537-9330 F:

[adriaticmarinellc.com](http://adriaticmarinellc.com)

