

DP-2 PLATFORM SUPPLY VESSEL

M/V CELTIC



MAIN SPECIFICATIONS

Length: 195' Light Draft: 5'-2"
Beam: 40' Loaded Draft: 11' - 10 3/8"
Depth: 14' Light Ship: 699.10 LT

CAPACITIES

Ballast/Drill Water: 120,200 gal. Hydraulic Oil: 440 gal.
Fuel: 110,200 gal. Lube Oil: 335 gal.
Liquid Mud: 2,300 barrels Gear Oil: 440 gal.
Dry Bulk: n/a Oily Water: 1,060 gal.
Potable Water: 15,700 gal. Deadweight: 1,270 LT
Waste Oil: 1,640 gal.

CARGO DECK

Tonnage: 800 LT Width 31' 6"
Strength (lbs./sq.-ft.): 540 Clear Space (W): 4,125 sq. ft.
Length: 131'

TONNAGE

Gross Tonnage: 89 Net. Tonnage: 60

ACCOMMODATIONS

Cabins/Berths for Crew and Passengers: 40 bunks
Passenger Seating: 40

MACHINERY

Main Engines: (2) Cummins KTA-38M
Brake HP: 1,000 each
Propulsion: Diesel
Generator: (2) Cummins QSK-19, (1) Cummins QSM-11
Generator Drives: (2) 525 kW each, (1) 300 kW
Bow Thrusters: (2) 350 HP each
Stern Thrusters: (1) 335 HP
Thruster Drive Engine: Electric
Rudders: (2) Fishtail Type

PERFORMANCE

Maximum Speed: 14 knots
Cruising Speed: 12 knots
Maximum Fuel Consumption: 160 USG/Hr
Cruising Fuel Consumption: 100 USG/Hr

DISCHARGE RATES

Drill Water: 400 USG/min @ 80 ft
Fuel: 400 USG/min @ 80 ft
Liquid Mud: 700 USG/min @ 150 ft
Potable Water: 400 USG/min @ 80 ft
Dry Bulk: n/a

ELECTRONICS AND CONTROLS

GYRO Compass: 3
Depth Recorder: 1
Dynamic Positioning: Marine Technologies
DP References: Cyscan
GPS: 2
Wind Tracker: 3
Main Engine Controls: Local and Bridge
Radar: (2) Furuno
Radio System: 1
VHF: 3

SPECIAL EQUIPMENT

Anchor Chain: 555' - 1" chain
Anchors: 750 lb.
Survival Craft: 4ea -20 person Life Floats
Rescue Boat: 1ea - 6 man capacity
Moon Pool: 36"
Bulk Compressors: n/a
Oil Water Separator: n/a
Welding Machine: n/a
Sewage Treatment: n/a

DOCUMENTATION

Class: ABS Class | DPS-2 | A1, circle e | AMS
Flag: USA | USCG: SubL, OSV. | Official Number: 1248668

Corporate Office

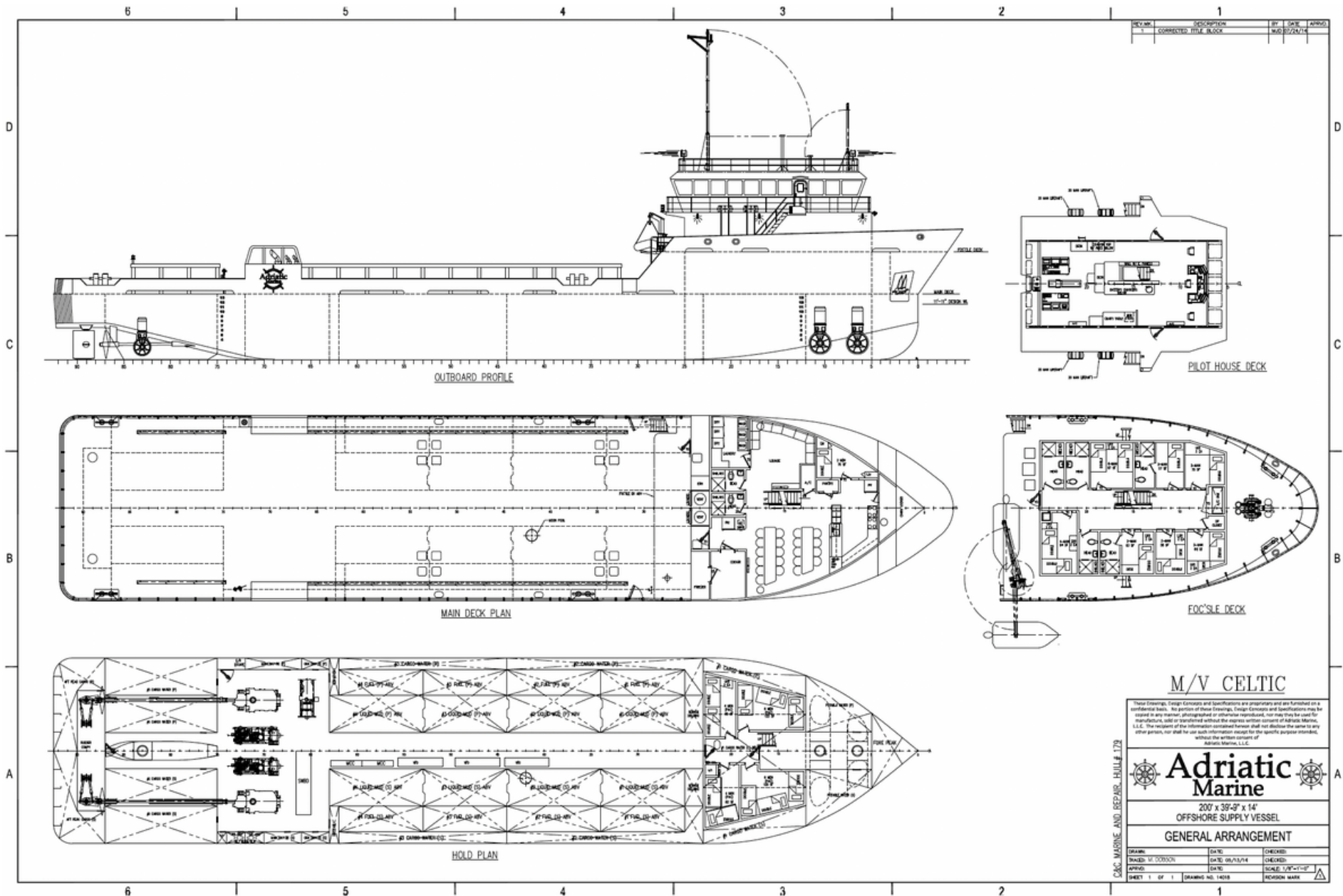
201 Raceland St., Raceland, LA 70394
P: 985-537-9330 F:

adriaticmarinellc.com



M/V CELTIC

DP-2 PLATFORM
SUPPLY VESSEL



Corporate Office

201 Raceland St., Raceland, LA 70394

P: 985-537-9330 F:

adriaticmarinellc.com

