

DP-1 PLATFORM SUPPLY VESSEL M/V MEDITERRANEAN



MAIN SPECIFICATIONS

Length: 170'
Length BP: 148'
Beam: 36'
Depth: 11'-6"
Light Draft: 5'-2"
Loaded Draft: 9'-9 3/4"
Light Ship: 456 LT

CAPACITIES

Ballast/Drill Water: 63,864 gal.
Fuel: 60,686 gal.
Liquid Mud: 1,704 barrels
Fresh Water: 4,233 gal.
Dry Bulk: n/a
Waste Oil: 493 gal.
Hydraulic Oil: 319 gal.
Lube Oil: 369 gal.
Oily Water: 493 gal.
Deadweight: n/a

CARGO DECK

Tonnage: 550 LT
Strength (lbs./sq.-ft.): 540
Length: 112'
Width 30.5'
Clear Space (W): 3,400 sq. ft.

TONNAGE

Gross Tonnage: 83
Net. Tonnage: 57

ACCOMMODATIONS

Cabins/Berths for Crew and Passengers: 28 bunks
Passenger Seating: 40

MACHINERY

Main Engines: (2) Cummins KTA-38MO
Brake HP: 850 each
Propulsion: Diesel
Generator: (2) Cummins QSM11
Generator Drives: 286 kW Each
Bow Thrusters: 500 HP
Stern Thrusters: n/a
Bow Thruster Drive Engine: Electric
Rudders: (2) Fishtail Type

PERFORMANCE

Maximum Speed: 14 knots
Cruising Speed: 12 knots
Maximum Fuel Consumption: 160 USG/Hr
Cruising Fuel Consumption: 100 USG/Hr

DISCHARGE RATES

Drill Water: 400 USG/min @ 80 ft
Fuel: 400 USG/min @ 80 ft
Liquid Mud: 700 USG/min @ 150 ft
Potable Water: 400 USG/min @ 80 ft
Dry Bulk: n/a

ELECTRONICS AND CONTROLS

GYRO Compass: 1
Depth Recorder: 1
Dynamic Positioning: Yes
DP References: Yes
GPS: 1
Wind Tracker: Yes
Main Engine Controls: Local and Bridge
Radar: (2) Furuno
Radio System: 1
VHF: 3
Internet: n/a

SPECIAL EQUIPMENT

Anchor Handling: n/a
Anchors: 750 lb.
Survival Craft: n/a
Rescue Boat: n/a
Moon Pool: n/a
Bulk Compressors: n/a
Oil Water Separator: n/a
Welding Machine: n/a
Sewage Treatment: n/a

DOCUMENTATION

Class: ABS Loadline | DPS-1
Flag: USA | USCG: SubL, OSV. | Official Number: 1207578

Corporate Office

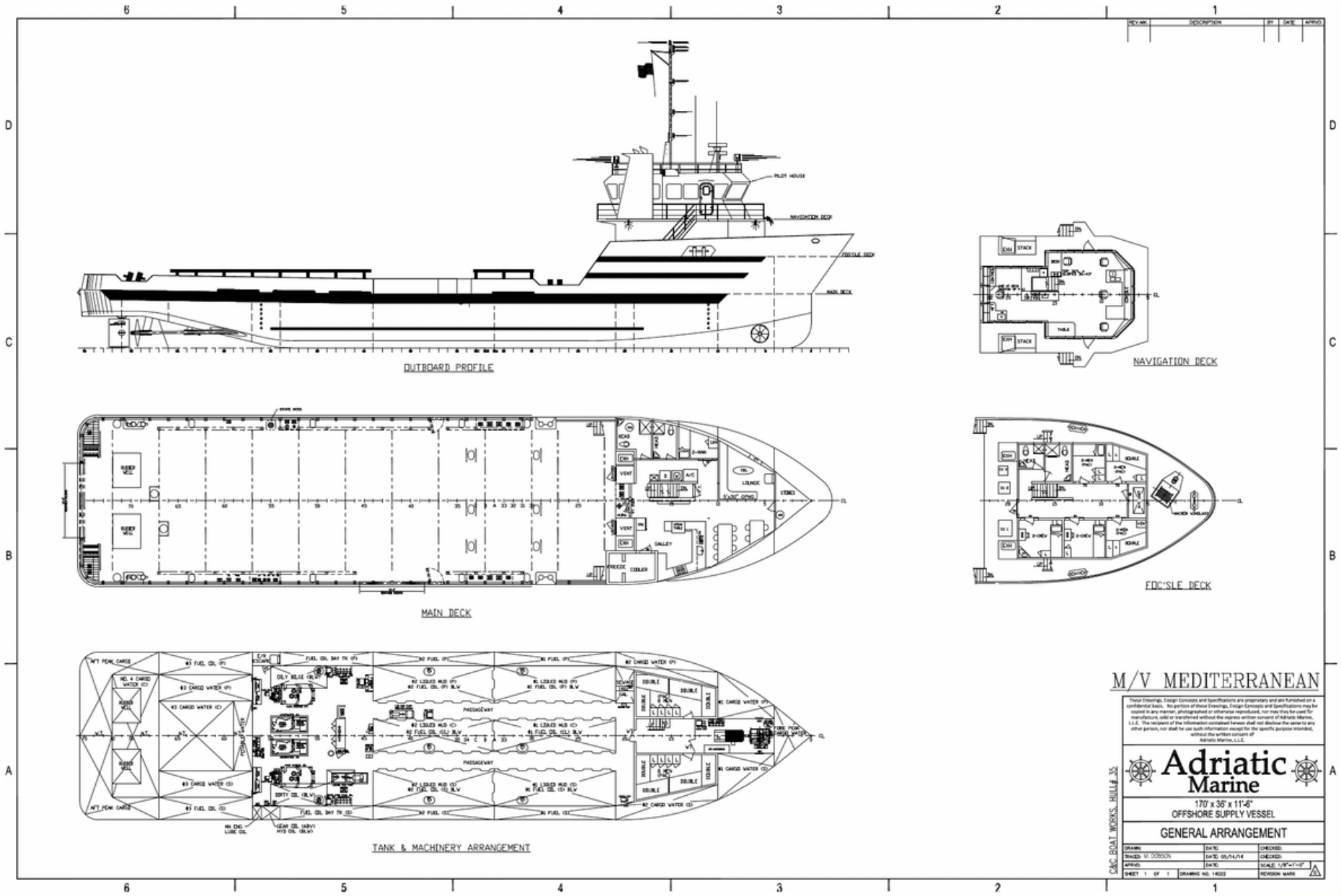
201 Raceland St., Raceland, LA 70394
P: 985-537-9330 F:

adriaticmarinellc.com



M/V MEDITERRANEAN

DP-1 PLATFORM
SUPPLY VESSEL



M/V MEDITERRANEAN

These Drawings, Design Concepts and Specifications are proprietary and are furnished on a confidential basis. No portion of these Drawings, Design Concepts and Specifications may be copied in any manner, photographed or otherwise reproduced, nor may they be used for manufacture, sale or transferred without the express written consent of Adriatic Marine, L.L.C. The recipient of the information contained herein shall not disclose the same to any other person, nor shall he use such information except for the specific purpose intended, without the written consent of Adriatic Marine, L.L.C.

Adriatic Marine

170' x 36' x 11'-6"
OFFSHORE SUPPLY VESSEL

GENERAL ARRANGEMENT

DRAWN: M. SCROVIN	DATE: 08/14/14	CHECKED:
APPROVED:	DATE:	SCALE: 1/8"=1'-0"
SHEET: 1 OF 1	DRAWING NO.: 14022	REVISION MARK:

Corporate Office
201 Raceland St., Raceland, LA 70394
P: 985-537-9330 F:

adriaticmarinellc.com

