

## DP-2 PLATFORM SUPPLY VESSEL

# M/V ADRIATIC



### MAIN SPECIFICATIONS

Length: 195'      Light Draft: 5'-2"  
Beam: 40'        Loaded Draft: 11'  
Depth: 14'       -- 10-3/8"

### CAPACITIES

Ballast/Drill Water: 75,750 gal.      Waste Oil: 1,640 gal.  
Fuel: 102,700 gal.                      Hydraulic Oil: 440 gal.  
Liquid Mud: 2,300 barrels            Lube Oil: 335 gal.  
Dry Bulk: n/a                              Deadweight: TBD LT  
Potable Water: 15,700 gal.

### CARGO DECK

Tonnage: TBD LT                          Width 31' 6"  
Strength (lbs./sq.-ft.): 540            Clear Space (W): 4,125 sq. ft.  
Length: 131'

### TONNAGE

Gross Tonnage: 89      Net. Tonnage: 60

### ACCOMMODATIONS

Cabins/Berths for Crew and Passengers: 40 bunks  
Passenger Seating: 40

### MACHINERY

Main Engines: (2) Cummins QSK-38M  
Brake HP: 1000 each  
Propulsion: Diesel  
Generator: (2) Cummins QSK-19, (1) Cummins QSM-11  
Generator Drives: (2) 525 KW each, (1) 300 KW  
Bow Thrusters: (2) Bow 350 HP each  
Stern Thrusters: (1) Stern 335 HP  
Thruster Drive Engine: Electric  
Rudders: 2 Fishtail Type (65-deg turn)

### PERFORMANCE

Maximum Speed 14 knots  
Cruising Speed 12 knots  
Maximum Fuel Consumption 160 USG/Hr  
Cruising Fuel Consumption 100 USG/Hr

### DISCHARGE RATES

Drill Water: 400 USG/min @ 80 ft  
Fuel: 400 USG/min @ 80 ft  
Liquid Mud: 700 USG/min @ 150 ft  
Potable Water: 400 USG/min @ 80 ft  
Dry Bulk: n/a

### ELECTRONICS AND CONTROLS

GYRO Compass: 3  
Depth Recorder: 1  
Dynamic Positioning: Marine Technologies  
DP References: Cyscan  
GPS: 2  
Wind Tracker: 3  
Main Engine Controls: Local and Bridge  
Radar: (2) Furuno  
Radio System: 1  
VHF: 3

### SPECIAL EQUIPMENT

Survival Craft 4ea -20 person Life Floats  
Rescue Boat 1ea - 6 person capacity  
Moon Pool 36"  
Bulk Compressors n/a  
Oil Water Separator N/A  
Welding Machine N/A  
Sewage Treatment N/A

### DOCUMENTATION

Class: ABS Class | DPS-2 | A1, circle e | AMS  
Flag: USA | USCG: SubL, OSV. | Official Number: 1258015

### Corporate Office

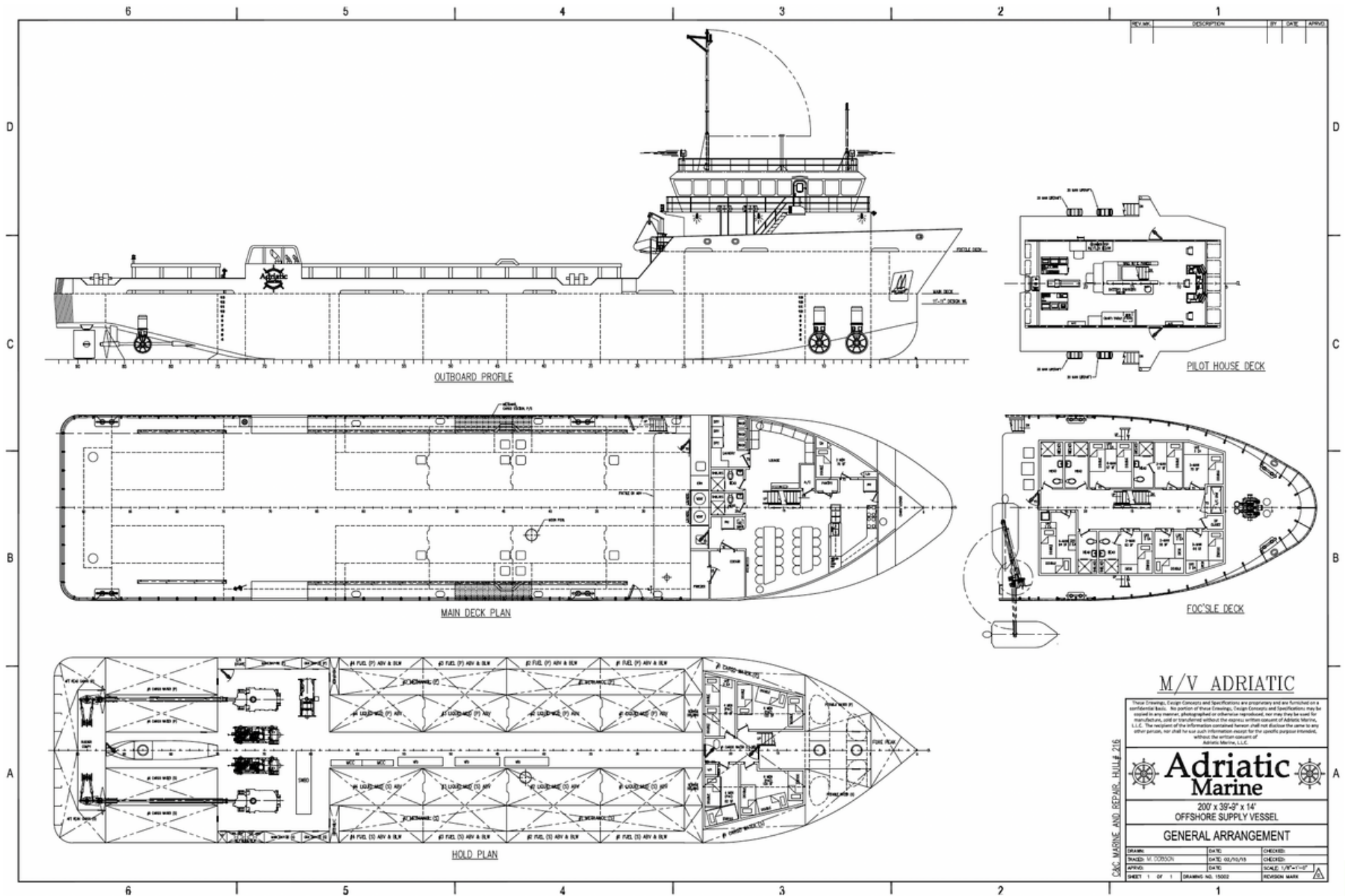
201 Raceland St., Raceland, LA 70394  
P: 985-537-9330 F:

[adriaticmarinellc.com](http://adriaticmarinellc.com)



# M/V ADRIATIC

DP-2 PLATFORM  
SUPPLY VESSEL



## M/V ADRIATIC

These Drawings, Design Concepts and Specifications are proprietary and are furnished on a confidential basis. No portion of these Drawings, Design Concepts and Specifications may be copied in any manner, photographed or otherwise reproduced, nor may they be used for reproduction, sold or transferred without the express written consent of Adriatic Marine, L.L.C. The recipient of the information contained herein shall not disclose the same to any other person, nor shall he use such information except for the specific purpose intended, without the written consent of Adriatic Marine, L.L.C.



200' x 39'-3" x 14'  
OFFSHORE SUPPLY VESSEL  
GENERAL ARRANGEMENT

DESIGNED BY	DATE	CHECKED
DRAWN BY	DATE	CHECKED
APPROV	DATE	CHECKED
SHEET 1 OF 1	DRAWING NO. 15002	SCALE: 1/8"=1'-0"

**Corporate Office**  
201 Raceland St., Raceland, LA 70394  
P: 985-537-9330 F:

adriaticmarinellc.com

