

DP-2 PLATFORM SUPPLY VESSEL

M/V ADRIATIC



MAIN SPECIFICATIONS

Length: 195' Light Draft: 5'-2"
Beam: 40' Loaded Draft: 11' -- 10-3/8"
Depth: 14'

CAPACITIES

Ballast/Drill Water: 75,750 gal. Waste Oil: 1,640 gal.
Fuel: 102,700 gal. Hydraulic Oil: 440 gal.
Liquid Mud: 2,300 barrels Lube Oil: 335 gal.
Methanol: 1,200 bbls Deadweight: TBD LT
Dry Bulk: n/a
Potable Water: 15,700 gal.

CARGO DECK

Tonnage: TBD LT Width 31' 6"
Strength (lbs./sq.-ft.): 540 Clear Space (W): 4,125 sq. ft.
Length: 131'

TONNAGE

Gross Tonnage: 89 Net. Tonnage: 60

ACCOMMODATIONS

Cabins/Berths for Crew and Passengers: 40 bunks
Passenger Seating: 40

MACHINERY

Main Engines: (2) Cummins QSK-38M
Brake HP: 1000 each
Propulsion: Diesel
Generator: (2) Cummins QSK-19, (1) Cummins QSM-11
Generator Drives: (2) 525 KW each, (1) 300 KW
Bow Thrusters: (2) Bow 350 HP each
Stern Thrusters: (1) Stern 335 HP
Thruster Drive Engine: Electric
Rudders: 2 Fishtail Type (65-deg turn)

PERFORMANCE

Maximum Speed 14 knots
Cruising Speed 12 knots
Maximum Fuel Consumption 160 USG/Hr
Cruising Fuel Consumption 100 USG/Hr

DISCHARGE RATES

Drill Water: 400 USG/min @ 80 ft
Fuel: 400 USG/min @ 80 ft
Liquid Mud: 700 USG/min @ 150 ft
Potable Water: 400 USG/min @ 80 ft
Dry Bulk: n/a

ELECTRONICS AND CONTROLS

GYRO Compass: 3
Depth Recorder: 1
Dynamic Positioning: Marine Technologies
DP References: Cyscan
GPS: 2
Wind Tracker: 3
Main Engine Controls: Local and Bridge
Radar: (2) Furuno
Radio System: 1
VHF: 3

SPECIAL EQUIPMENT

Survival Craft 4ea -20 person Life Floats
Rescue Boat 1ea - 6 person capacity
Moon Pool 36"
Bulk Compressors n/a
Oil Water Separator N/A
Welding Machine N/A
Sewage Treatment N/A

DOCUMENTATION

Class: ABS Class | DPS-2 | A1, circle e | AMS
Flag: USA | USCG: SubL, OSV. | Official Number: 1258015

Corporate Office

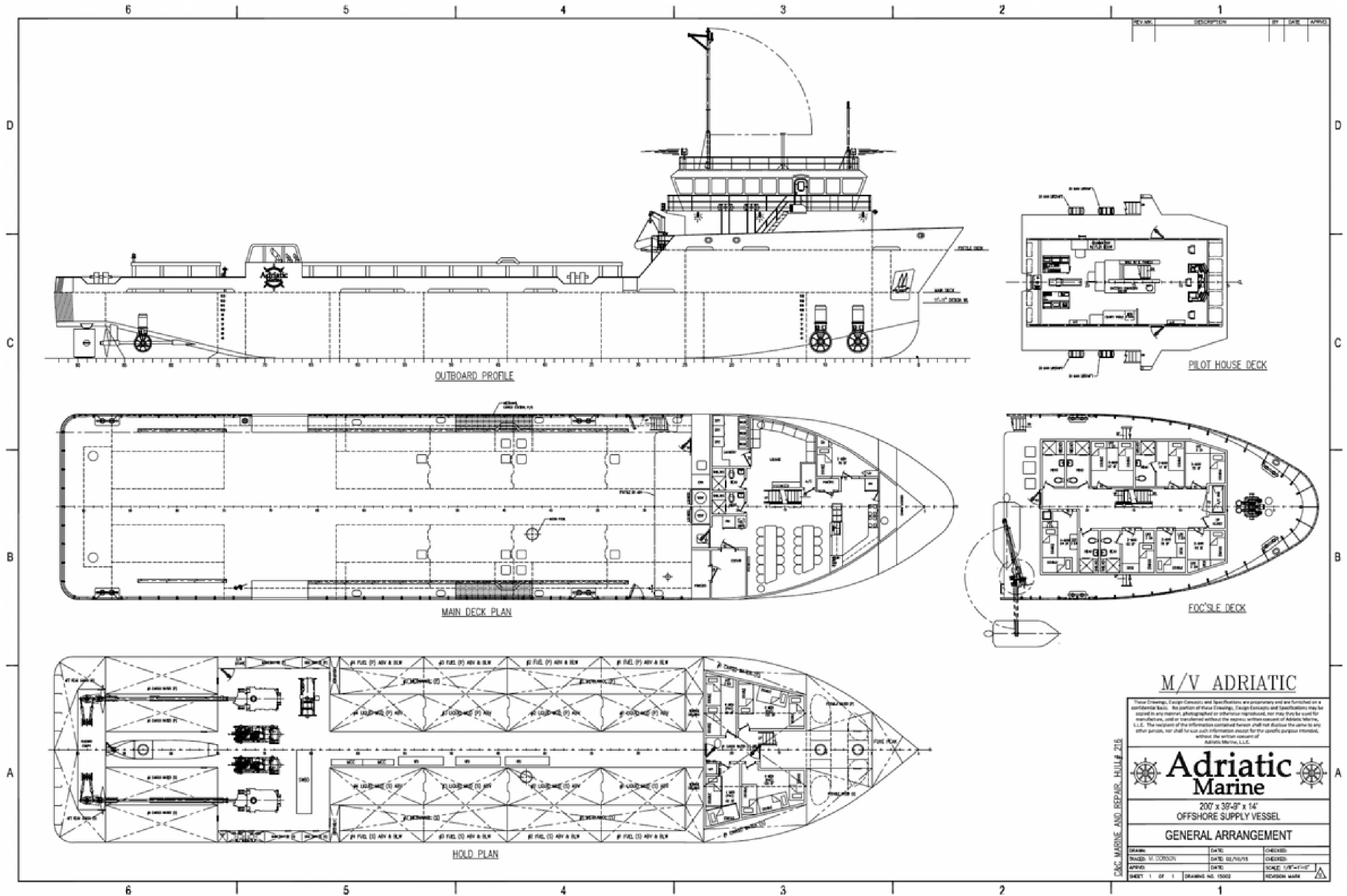
201 Raceland St., Raceland, LA 70394
P: 985-537-9330 F:

adriaticmarinellc.com



M/V ADRIATIC

DP-2 PLATFORM
SUPPLY VESSEL



M/V ADRIATIC

These Drawings, Design Concepts and Specifications are proprietary and are furnished on a non-binding basis. No portion of these Drawings, Design Concepts and Specifications may be copied in any manner, photographed or otherwise reproduced, nor may they be used for manufacturing, and/or construction without the express written consent of Adriatic Marine, L.L.C. The recipient of the information contained herein shall not disclose the same to any other person, nor shall he use such information except for the specific purpose intended, without the written consent of Adriatic Marine, L.L.C.



200' x 39'-3" x 14'
OFFSHORE SUPPLY VESSEL
GENERAL ARRANGEMENT

DESIGNER	DATE	CHECKED
BRUCE W. TORSON	DATE 02/10/13	CHECKED
APPROVED	DATE	SCALE 1/8"=1'-0"
SHEET 1 OF 1	DRAWING NO. 15000	REVISION MARK

Corporate Office
201 Raceland St., Raceland, LA 70394
P: 985-537-9330 F:

adriaticmarinellc.com

