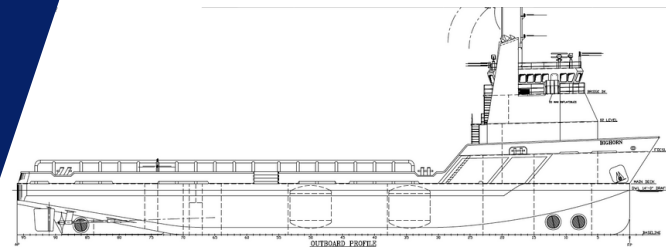


DP-2 PLATFORM SUPPLY VESSEL M/V BIG HORN



MAIN SPECIFICATIONS

Length: 220' Light Draft: 8'
Beam: 48' Loaded Draft: 16'
Depth: 16'

CAPACITIES

Ballast/Drill Water: 89,000 gal. Waste Oil: 2,000 gal.
Fuel: 112,200 gal. Hydraulic Oil: 400 gal.
Liquid Mud: 4,280 barrels Lube Oil: 1,200 gal.
Dry Bulk: 5,400 Ft3 Deadweight: 1,630 LT
Potable Water: 7,800 gal.

CARGO DECK

Tonnage: 1,200 LT Width 40'
Strength (lbs./sq.-ft.): 540 Clear Space (W): 5,840 sq. ft.
Length: 146'

TONNAGE

Gross Tonnage: 98 Net. Tonnage: 67

ACCOMMODATIONS

Cabins/Berths for Crew and Passengers: 30 bunks
Passenger Seating: 30

MACHINERY

Main Engines: (2) Cat 3512-B-HD
Brake HP: 1911 each
Propulsion: Diesel
Generator: (2) C-32
Generator Drives: 910 kW Each
Bow Thrusters: (2) Omega 450 HP each
Stern Thrusters: (1) Omega 450 HP
Thruster Drive Engine: Electric
Rudders: Spade

PERFORMANCE

Maximum Speed 13.5 knots
Cruising Speed 11 knots
Maximum Fuel Consumption 125 USG/Hr
Cruising Fuel Consumption 100 USG/Hr

DISCHARGE RATES

Drill Water: 400 USG/min @ 260 ft
Fuel: 400 USG/min @ 260 ft
Liquid Mud: 700 USG/min @ 150 ft
Potable Water: 400 USG/min @ 80 ft
Dry Bulk: 80 psi

ELECTRONICS AND CONTROLS

GYRO Compass: 3
Depth Recorder: 1
Dynamic Positioning: Kongsberg
DP References: 1
GPS: 2
Wind Tracker: 3
Main Engine Controls: Local and Bridge
Radar: (2) Furuno
Radio System: 1
VHF: 3

SPECIAL EQUIPMENT

Survival Craft 3ea -16 person Life Floats
Rescue Boat N/A
Bulk Compressors Leroy Comp Air
Oil Water Separator N/A
Welding Machine N/A
Sewage Treatment N/A

DOCUMENTATION

Class: ABS Class | DPS-2 | A1, circle e | AMS
Flag: USA | USCG: SubL, OSV. | Official Number: 1241631

Corporate Office

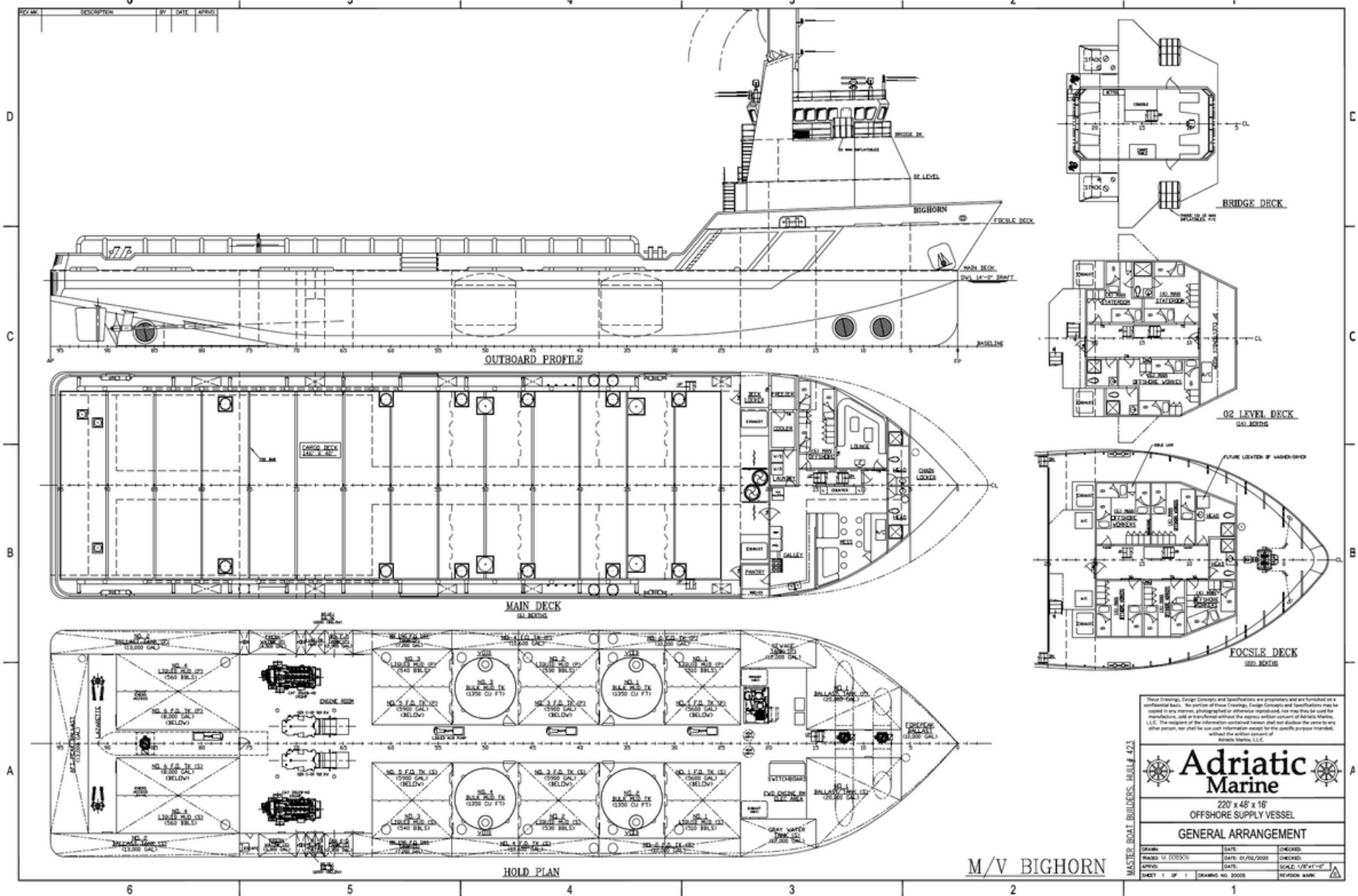
201 Raceland St., Raceland, LA 70394
P: 985-537-9330 F:

adriaticmarinellc.com



M/V BIG HORN

DP-2 PLATFORM
SUPPLY VESSEL



M/V BIGHORN

These Drawings, Design Concepts and Specifications are proprietary and are furnished as a confidential basis. The provision of these Drawings, Design Concepts and Specifications may be copied in any manner, photographed or otherwise reproduced, nor may they be used for manufacture, sale or distribution without the express written consent of Adriatic Marine, L.L.C. The recipient of this information combined herewith shall not disclose the same to any other person, nor shall he use such information except for the specific purpose intended, without the written consent of Adriatic Marine, L.L.C.

Adriatic Marine	
220' x 48' x 16'	
OFFSHORE SUPPLY VESSEL	
GENERAL ARRANGEMENT	
DRAWN:	DATE:
REVISED BY:	DATE:
APPROVED:	DATE:
CHECKED:	DATE:
CHECK 1 OF 1	DRAWING NO. 20025
	REVISION MARK

Corporate Office
201 Raceland St., Raceland, LA 70394
P: 985-537-9330 F:

adriaticmarinellc.com

