

DP-1 PLATFORM SUPPLY VESSEL

M/V PINTAIL



MAIN SPECIFICATIONS

Length: 205' Light Draft: 7' 4"
Beam: 46' Loaded Draft: 12' 6"
Depth: 15'

CAPACITIES

Ballast/Drill Water: 74,000 gal. Hydraulic Oil: 600 gal.
Fuel: 100,000/190,000 gal. Lube Oil: 1,800 gal.
Liquid Mud: 2,300 bbls. Sewage & Greywater:
Dry Bulk: (6) 6,000 Ft3 4,400 gal. each
Potable Water: 12,000 gal. Deadweight: n/a
Waste Oil: 2,600 gal.

CARGO DECK

Tonnage: 925 LT Width: 40'
Strength (lbs./sq.-ft.): 540 Clear Space (W): 5,280 sq. ft.
Length: 132'

TONNAGE

Gross Tonnage: 97 Net. Tonnage: 66

ACCOMMODATIONS

Cabins/Berths for Crew and Passengers: 22 berths
Certified to Carry: 40

MACHINERY

Main Engines: (2) Caterpillar 3512B
Brake HP: 3150
Propulsion: Diesel
Generator Parallel Capacity: 1,350 KW
(480 V)
Bow Thruster: (2) Schottel
Bow Thruster Drive Engine: Diesel
Rudders: Independent Rudders
Stern Thruster: (1) Schottel

ELECTRONICS AND CONTROLS

GYRO Compass: 2
Depth Recorder: 1
Dynamic Positioning: Yes
DP References: Yes
GPS: 2
Wind Tracker: Yes
Main Engine Controls: Local and Bridge
Radar: (2) Furuno
SSB Radio: 1
VHF: 3
Fathometer: (1) Furuno
Interfaced CD Plotter: n/a
DGPS: (2) Furuno
AIS: (1) Furuno

PERFORMANCE

Maximum Speed: 13.5 knots
Cruising Speed: 11 knots
Maximum HP: 3,150 @ 1,600 RPM
Propellers: 5 BLD Nibral

DISCHARGE RATES

Drill Water: 400 USG/min @ 260 ft
Fuel: 400 USG/min @ 260 ft
Liquid Mud: 700 USG/min @ 150 ft
Potable Water: 400 USG/min @ 80 ft
Dry Bulk: 80 psi

SPECIAL EQUIPMENT

Anchor Chain: 555' - 1" chain
Anchors: (2) 2,000 lb.
Survival Craft: 3ea -15 person Life Floats
Rescue Boat: n/a
Walk-In Cooler: Yes
Walk-In Freezer: Yes
A/C & Heater: 15 tons
Fire Monitor: Ekhart

DOCUMENTATION

Class: OSV DP-1 | Builder: Master Boats
Flag: USA | USCG: SubL, OSV. | Official Number: 1186227

Corporate Office

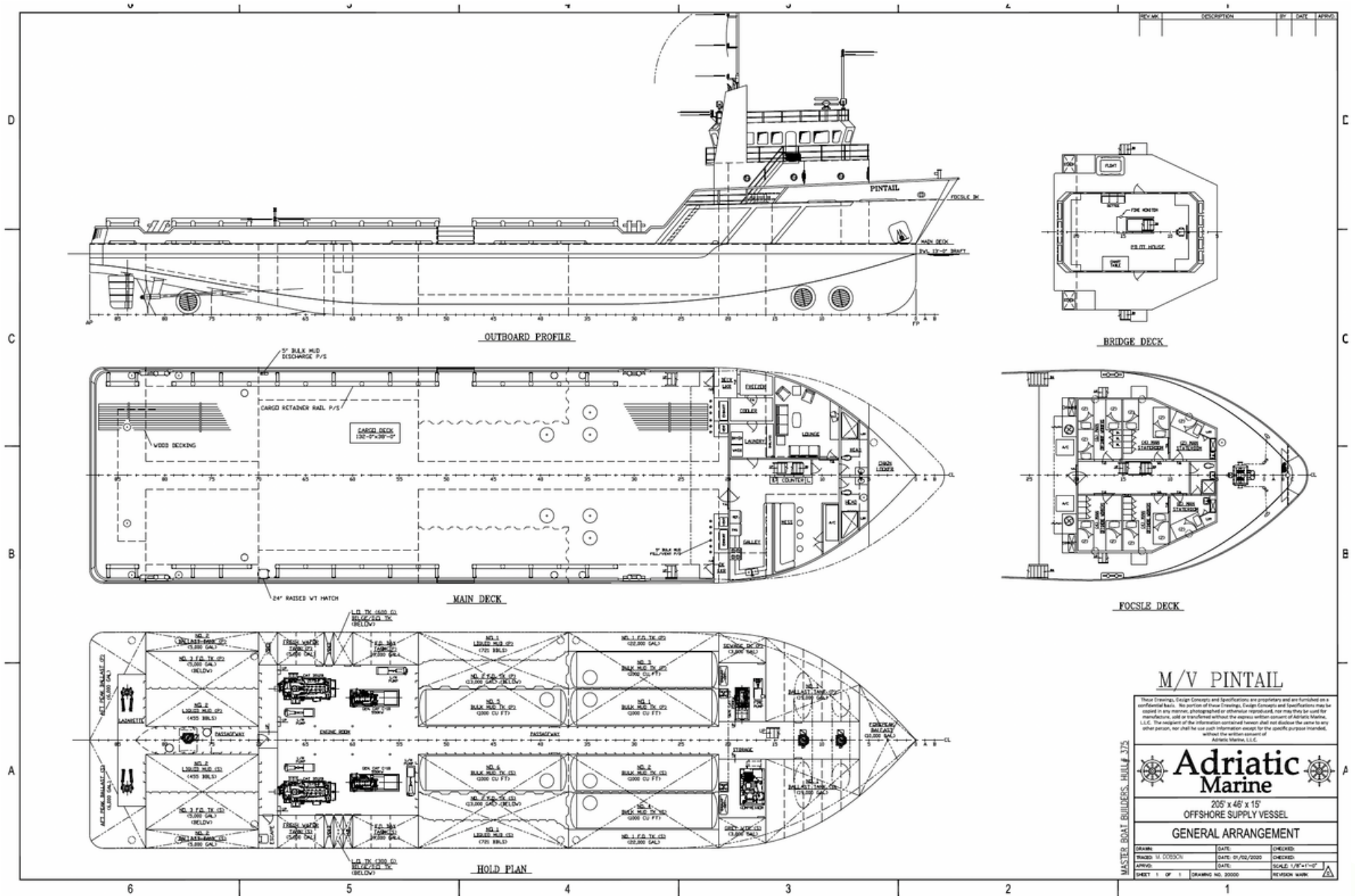
201 Raceland St., Raceland, LA 70394
P: 985-537-9330 F:

adriaticmarinellc.com



M/V PINTAIL

DP-1 PLATFORM
SUPPLY VESSEL



Corporate Office

201 Raceland St., Raceland, LA 70394

P: 985-537-9330 F:

adriaticmarinellc.com

